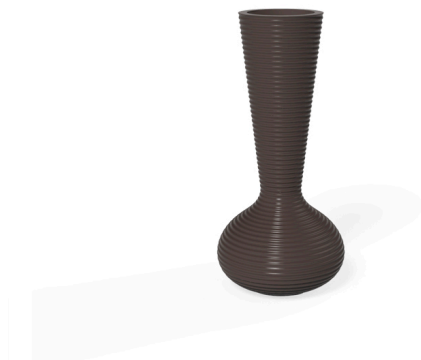


# BLOOM MACETA

By Eugeni Quitllet



Eugeni Quitllet metaphorically captures the flowering stage found in nature. Intended for public spaces, the BLOOM LAMP- PLANTER's beauty establishes a relationship between sculptural form and technology, thanks to its LED feature. Inspiration transformed into poetry:  
 BLOOM lights by night...  
 BLOOM buds by day...  
 BLOOM a mirage from the depths of the sea  
 like a night flower facing the sunset...  
 that opens, awakes a new being...

View online: <https://www.vondom.com/products/65019A>

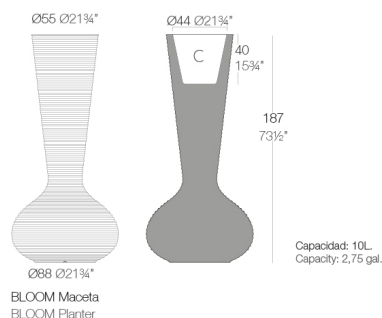
## Features

### Description

Made of polyethylene resin by rotational moulding. 100% Recyclable. Item suitable for indoor and outdoor use. Available in different finishes.

### Weight

35 Kg



## Finishes

### SELF-WATERING

Ref. 65019R

Self-watering system included in all planters except those with basic finish

### BASIC

Ref. 65019A

Matt Polyethylene

### LACQUERED

Ref. 65019F

Lacquered Polyethylene

### LIGHT

Ref. 65019W

White internally lit unit with LED technology. Available only in matte ice white finish.

### RGBW LED

Ref. 65019L

Unit with internal lighting with RGBW LED technology and remote control unit for switching colors. Available only in matte ice white finish. Remote control included.

### RGBW LED DMX

Ref. 65019D

Unit with internal lighting with RGBW LED technology and remote control unit for switching colors. Also controlled by DMX-1024 (wireless), enabling communication between one or more products simultaneously via the DMX transmitter (not included).

### RGBW LED BATTERY

Ref. 65019DY

Unit with internal lighting with battery-powered RGBW LED technology. Includes charger and remote control for switching colors and charger. Available only in matte ice white finish.

COLOR	BASIC	LACQUERED / LACADO	LUZ	AUTORRIEGO
ICE				
WHITE				
BLACK				
BRONZE				
STEEL				
ANTHRACITE				
RED				
PISTACHIO				
ORANGE				
KAKI				
NAVY				
TAUPE				
PLUM				
ECRU				
BEIGE				
CHAMPAGNE				

