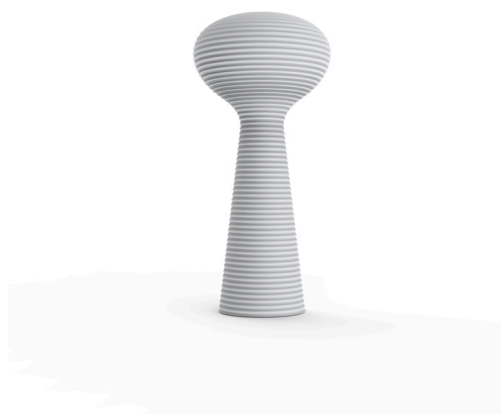


BLOOM LAMPARA

By Eugeni Quitllet



Eugeni Quitllet metaphorically captures the flowering stage found in nature. Intended for public spaces, the BLOOM LAMP- PLANTER's beauty establishes a relationship between sculptural form and technology, thanks to its LED feature. Inspiration transformed into poetry:
 BLOOM lights by night...
 BLOOM buds by day...
 BLOOM a mirage from the depths of the sea
 like a night flower facing the sunset...
 that opens, awakes a new being...

View online: <https://www.vondom.com/products/65018>

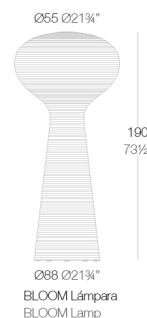
Features

Description

Made of polyethylene resin by rotational moulding. 100% Recyclable. Item suitable for indoor and outdoor use. Available in different finishes.

Weight

37.6 Kg



Finishes

LIGHT

Ref. 65018W

White internally lit unit with LED technology. Available only in matte ice white finish.

RGBW LED

Ref. 65018L

Unit with internal lighting with RGBW LED technology and remote control unit for switching colors. Available only in matte ice white finish. Remote control included.

RGBW LED DMX

Ref. 65018D

Unit with internal lighting with RGBW LED technology and remote control unit for switching colors. Also controlled by DMX-1024 (wireless), enabling communication between one or more products simultaneously via the DMX transmitter (not included).

RGBW LED BATTERY

Ref. 65018Y

Unit with internal lighting with battery-powered RGBW LED technology. Includes charger and remote control for switching colors and charger. Available only in matte ice white finish.

COLOR

ICE

LUZ



