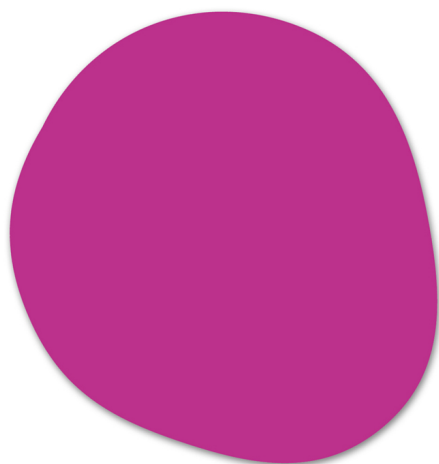


VONDOM®



## ALFOMBRA AGATHA PINK

By Agatha Ruiz de la Prada

AGATHA, by AGATHA RUIZ DE LA PRADA brings youthfulness, innocence and spontaneity to VONDOM's doors, being it's first Kids collection. The designer's characteristic icons are discerned instantly by their simple, sweet and refined shapes. This is a funny, creative and optimistic collection, set out in child-like terms: flowers, hearts... This Kids furniture collection consists of three basic components: a plant pot, a table and a mini chair. A flower with large petals is what makes up this table and plantpot, which are accompanied by heart-shaped stools. It's highly resistant material allows for exterior use, making it possible to enjoy it in the outdoors, or as a playground area. A dream-like garden where the vitality, imagination and ingenuity of children will become contagious is created thanks to these striking designer items.

See online: <http://www.vondom.com/products/62023>

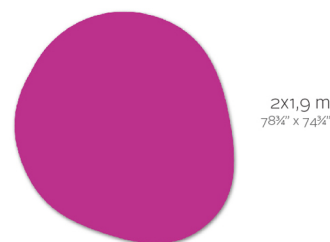
### Features

#### Description

Product designed by soft and resistant to UV rays Polyethylene fibres

#### Weight

11 Kg



2X1,9 m  
78 3/4" x 74 3/4"

AGATHA Pink  
AGATHA Fucsia

### Finishes

#### BASIC

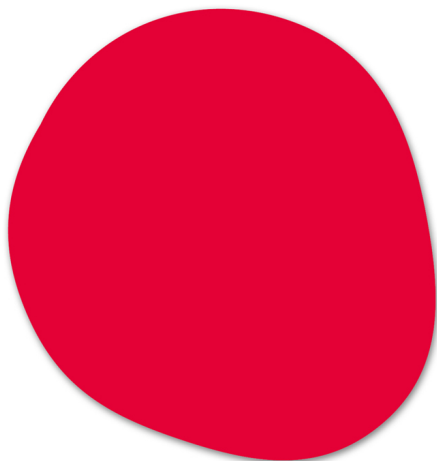
Ref. 62023

Matt Polyethylene

#### COLOR



VONDOM®



## ALFOMBRA AGATHA ROJA

By Agatha Ruiz de la Prada

AGATHA, by AGATHA RUIZ DE LA PRADA brings youthfulness, innocence and spontaneity to VONDOM's doors, being it's first Kids collection. The designer's characteristic icons are discerned instantly by their simple, sweet and refined shapes. This is a funny, creative and optimistic collection, set out in child-like terms: flowers, hearts... This Kids furniture collection consists of three basic components: a plant pot, a table and a mini chair. A flower with large petals is what makes up this table and plantpot, which are accompanied by heart-shaped stools. It's highly resistant material allows for exterior use, making it possible to enjoy it in the outdoors, or as a playground area. A dream-like garden where the vitality, imagination and ingenuity of children will become contagious is created thanks to these striking designer items.

See online: <http://www.vondom.com/products/62024>

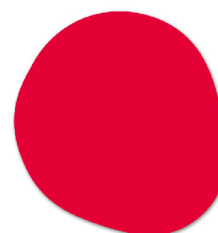
### Features

#### Description

Product designed by soft and resistant to UV rays Polyethylene fibres

#### Weight

11 Kg



2x1,9 m  
78 3/4" x 74 1/4"

AGATHA Red  
AGATHA Rojo

### Finishes

#### BASIC

Ref. 62024

Matt Polyethylene

#### COLOR

RED

#### BASIC

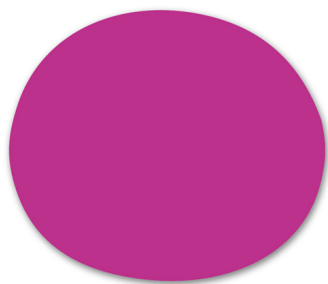




VONDOM®

## ALFOMBRA AGATHA PINK

By Agatha Ruiz de la Prada



AGATHA, by AGATHA RUIZ DE LA PRADA brings youthfulness, innocence and spontaneity to VONDOM's doors, being it's first Kids collection. The designer's characteristic icons are discerned instantly by their simple, sweet and refined shapes. This is a funny, creative and optimistic collection, set out in child-like terms: flowers, hearts... This Kids furniture collection consists of three basic components: a plant pot, a table and a mini chair. A flower with large petals is what makes up this table and plantpot, which are accompanied by heart-shaped stools. It's highly resistant material allows for exterior use, making it possible to enjoy it in the outdoors, or as a playground area. A dream-like garden where the vitality, imagination and ingenuity of children will become contagious is created thanks to these striking designer items.

See online: <http://www.vondom.com/products/62044>

### Features

#### Description

Product designed by soft and resistant to UV rays Polyethylene fibres

#### Weight

6.8 Kg



1,3X1,1 m  
51¼" x 43¾"

AGATHA Pink  
AGATHA Fucsia

### Finishes

#### BASIC

Ref. 62044

Matt Polyethylene

#### COLOR

PINK

#### BASIC



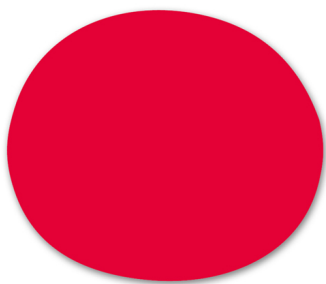




VONDOM®

## ALFOMBRA AGATHA ROJA

By Agatha Ruiz de la Prada



AGATHA, by AGATHA RUIZ DE LA PRADA brings youthfulness, innocence and spontaneity to VONDOM's doors, being it's first Kids collection. The designer's characteristic icons are discerned instantly by their simple, sweet and refined shapes. This is a funny, creative and optimistic collection, set out in child-like terms: flowers, hearts... This Kids furniture collection consists of three basic components: a plant pot, a table and a mini chair. A flower with large petals is what makes up this table and plantpot, which are accompanied by heart-shaped stools. It's highly resistant material allows for exterior use, making it possible to enjoy it in the outdoors, or as a playground area. A dream-like garden where the vitality, imagination and ingenuity of children will become contagious is created thanks to these striking designer items.

See online: <http://www.vondom.com/products/62045>

### Features

#### Description

Product designed by soft and resistant to UV rays Polyethylene fibres

#### Weight

6.8 Kg



1,3X1,1 m  
51¼" x 43¾"

AGATHA Red  
AGATHA Rojo

### Finishes

#### BASIC

Ref. 62045

Matt Polyethylene

#### COLOR

RED

#### BASIC



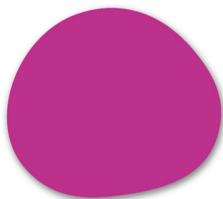




VONDOM®

## ALFOMBRA AGATHA PINK

By Agatha Ruiz de la Prada



AGATHA, by AGATHA RUIZ DE LA PRADA brings youthfulness, innocence and spontaneity to VONDOM's doors, being it's first Kids collection. The designer's characteristic icons are discerned instantly by their simple, sweet and refined shapes. This is a funny, creative and optimistic collection, set out in child-like terms: flowers, hearts... This Kids furniture collection consists of three basic components: a plant pot, a table and a mini chair. A flower with large petals is what makes up this table and plantpot, which are accompanied by heart-shaped stools. It's highly resistant material allows for exterior use, making it possible to enjoy it in the outdoors, or as a playground area. A dream-like garden where the vitality, imagination and ingenuity of children will become contagious is created thanks to these striking designer items.

See online: <http://www.vondom.com/products/62046>

### Features

#### Description

Product designed by soft and resistant to UV rays Polyethylene fibres

#### Weight

2 Kg



0,7x0,8 m  
27½" x 31½"

AGATHA Pink  
AGATHA Fucsia

### Finishes

#### BASIC

Ref. 62046

Matt Polyethylene

#### COLOR

PINK

#### BASIC

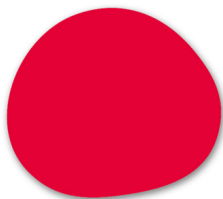




VONDOM®

## ALFOMBRA AGATHA ROJA

By Agatha Ruiz de la Prada



AGATHA, by AGATHA RUIZ DE LA PRADA brings youthfulness, innocence and spontaneity to VONDOM's doors, being it's first Kids collection. The designer's characteristic icons are discerned instantly by their simple, sweet and refined shapes. This is a funny, creative and optimistic collection, set out in child-like terms: flowers, hearts... This Kids furniture collection consists of three basic components: a plant pot, a table and a mini chair. A flower with large petals is what makes up this table and plantpot, which are accompanied by heart-shaped stools. It's highly resistant material allows for exterior use, making it possible to enjoy it in the outdoors, or as a playground area. A dream-like garden where the vitality, imagination and ingenuity of children will become contagious is created thanks to these striking designer items.

See online: <http://www.vondom.com/products/62047>

### Features

#### Description

Product designed by soft and resistant to UV rays Polyethylene fibres

#### Weight

2 Kg



0,7x0,8 m  
27½" x 31½"

AGATHA Red  
AGATHA Rojo

### Finishes

#### BASIC

Ref. 62047

Matt Polyethylene

#### COLOR

RED

#### BASIC



