

Products / Planters / Venus Planter ø 62x60

# Venus planter ø 62x60

by Marcel Wanders

Venus Collection, designed by Marcel Wanders for Vondom. This curvaceous vase adds character to any surrounding.

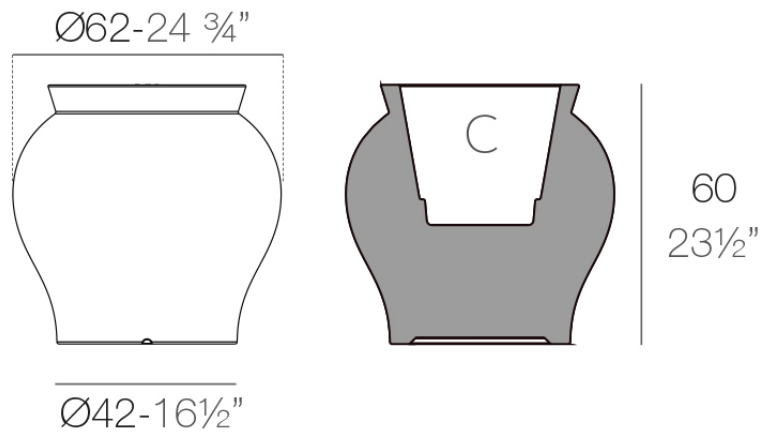


# Info

---

## Description

Weight: 36 Kg



VENUS Macetero 60 cm

C = 25 L

VENUS Planter 23 1/2"

C = 6 1/2 gal

# Finishes

---

## finishes

---

### BASIC

Ref. 67020A



purjai red



white



black



bronze



steel



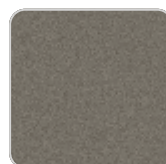
anthracite



red



khaki



taupe



ecru



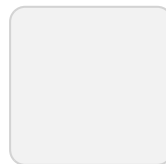
beige



orange



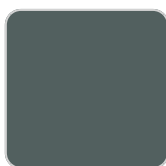
notte blue



ice



crema

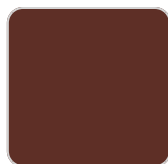


green

### Matt Polyethylene

### SELF-WATERING

Ref. 67022R



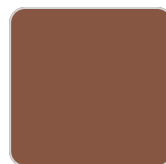
purjai red



white



black



bronze



steel



anthracite



red



khaki



taupe



ecru



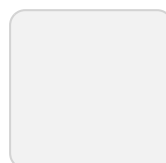
beige



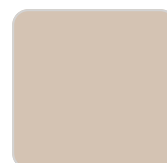
orange



notte blue



ice



crema



green

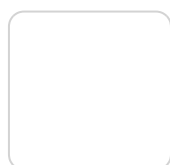
Self-watering system included in all planters except those with basic finish

## LACQUERED

Ref. 67022RF



purjai red



white



black



bronze



steel



anthracite



champany



red



khaki



taupe



ecru

beige

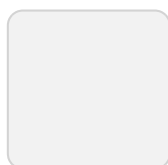
Lacquered Polyethylene

## lighting

---

### LIGHT

Ref. 67022W

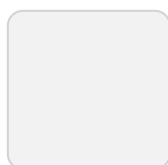


ice

White internally lit unit with LED technology. Available only in matte ice white finish.

### RGBW LED DMX

Ref. 67022D

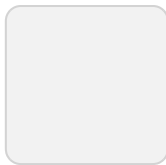


ice

Unit with internal lighting with RGBW LED technology and remote control unit for switching colors. Also controlled by DMX-1024 (wireless), enabling communication between one or more products simultaneously via the DMX transmitter (not included). There are two options to choose from: Professional XLR DMX and Home WIFI DMX. (Remote control included). Optional battery

### RGBW LED BATTERY

Ref. 67022Y

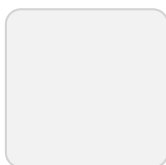


ice

Unit with internal lighting with battery-powered RGBW LED technology. Includes charger and remote control for switching colors and charger. Available only in matte ice white finish.

## RGBW LED DMX BATTERY

Ref. 67022DY



ice

Unit with internal lighting with RGBW LED technology and remote control unit for switching colors. Also controlled by DMX-1024 (wireless), enabling communication between one or more products simultaneously via the DMX transmitter (not included). There are two options to choose from: Professional XLR DMX and Home WIFI DMX. (Remote control included).

# Ambients

---



Products / Planters / Venus Planter ø 83x80

# Venus planter ø 83x80

by Marcel Wanders

Venus Collection, designed by Marcel Wanders for Vondom. This curvaceous vase adds character to any surrounding.



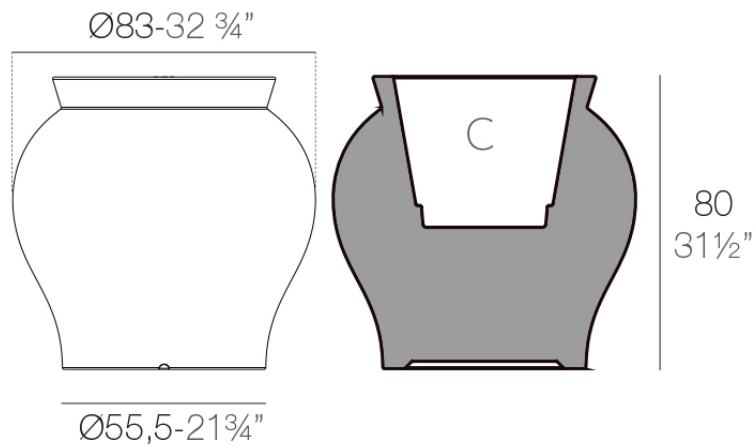


# Info

---

## Description

Weight: 16.02 Kg



VENUS Macetero 80 cm  
VENUS Planter 31 1/2"

C = 58 L  
C = 15 1/4 gal

# Finishes

---

## finishes

---

### BASIC

Ref. 67021A



purjai red



white



black



bronze



steel



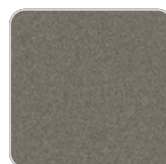
anthracite



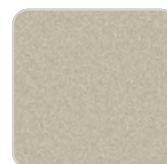
red



khaki



taupe



ecru



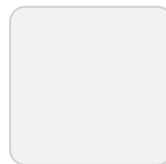
beige



orange



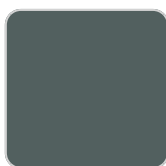
notte blue



ice



crema



green

### Matt Polyethylene

### SELF-WATERING

Ref. 67021R



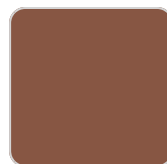
purjai red



white



black



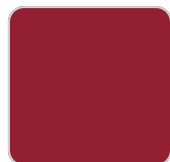
bronze



steel



anthracite



red



khaki



taupe



ecru



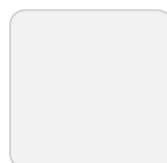
beige



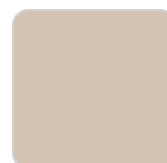
orange



notte blue



ice



crema



green

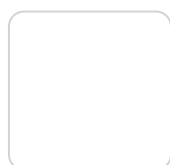
Self-watering system included in all planters except those with basic finish

## LACQUERED

Ref. 67021RF



purjai red



white



black



bronze



steel



anthracite



champany



red



khaki



taupe



ecru

beige

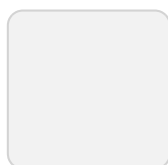
Lacquered Polyethylene

## lighting

---

### LIGHT

Ref. 67021W

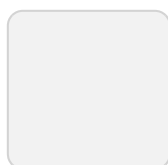


ice

White internally lit unit with LED technology. Available only in matte ice white finish.

### RGBW LED DMX

Ref. 67021D

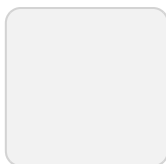


ice

Unit with internal lighting with RGBW LED technology and remote control unit for switching colors. Also controlled by DMX-1024 (wireless), enabling communication between one or more products simultaneously via the DMX transmitter (not included). There are two options to choose from: Professional XLR DMX and Home WIFI DMX. (Remote control included). Optional battery

### RGBW LED BATTERY

Ref. 67021Y

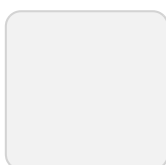


ice

Unit with internal lighting with battery-powered RGBW LED technology. Includes charger and remote control for switching colors and charger. Available only in matte ice white finish.

## RGBW LED DMX BATTERY

Ref. 67021DY



ice

Unit with internal lighting with RGBW LED technology and remote control unit for switching colors. Also controlled by DMX-1024 (wireless), enabling communication between one or more products simultaneously via the DMX transmitter (not included). There are two options to choose from: Professional XLR DMX and Home WIFI DMX. (Remote control included).

# Ambients

---



Products / Planters / Venus Planter ø125x120

# Venus planter ø125x120

by Marcel Wanders

Venus Collection, designed by Marcel Wanders for Vondom. This curvaceous vase adds character to any surrounding.

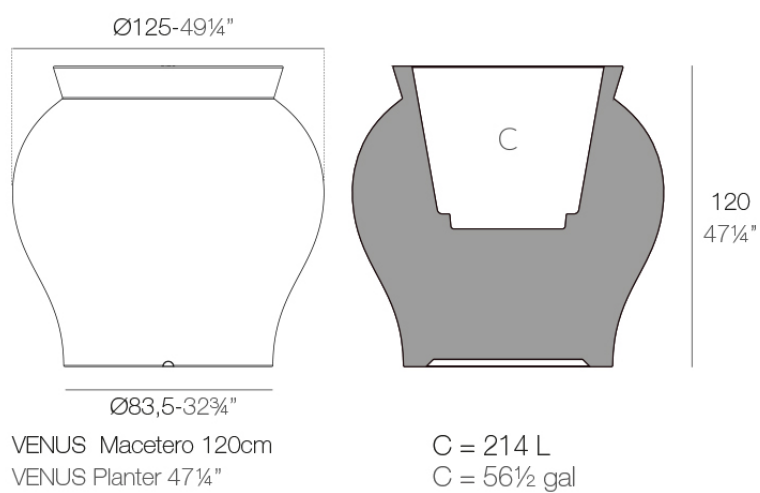


# Info

---

## Description

Weight: 36.02 Kg





# Finishes

---

## finishes

---

### SELF-WATERING

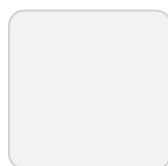
Ref. 67020R



purjai red



orange



ice



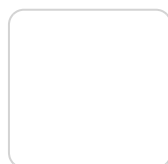
notte blue



crema



green



white



black



bronze



steel



anthracite



red



khaki



taupe



ecru



beige

Self-watering system included in all planters except those with basic finish

### LACQUERED

Ref. 67020RF



purjai red



white



black



bronze



steel



anthracite



red



khaki



taupe



ecru



beige



champany

Lacquered Polyethylene

## lighting

---

LIGHT

Ref. 67020W

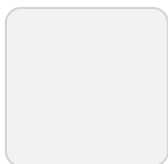


ice

White internally lit unit with LED technology. Available only in matte ice white finish.

RGBW LED

Ref. 67020L

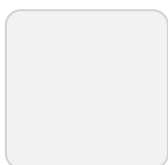


ice

Unit with internal lighting with RGBW LED technology and remote control unit for switching colors. Available only in matte ice white finish. Remote control included.

## RGBW LED DMX

Ref. 67020D

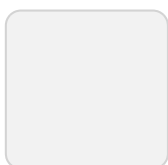


ice

Unit with internal lighting with RGBW LED technology and remote control unit for switching colors. Also controlled by DMX-1024 (wireless), enabling communication between one or more products simultaneously via the DMX transmitter (not included). There are two options to choose from: Professional XLR DMX and Home WIFI DMX. (Remote control included). Optional battery

## RGBW LED BATTERY

Ref. 67020Y

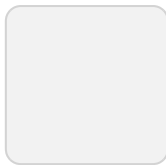


ice

Unit with internal lighting with battery-powered RGBW LED technology. Includes charger and remote control for switching colors and charger. Available only in matte ice white finish.

## RGBW LED DMX BATTERY

Ref. 67020DY



ice

Unit with internal lighting with RGBW LED technology and remote control unit for switching colors. Also controlled by DMX-1024 (wireless), enabling communication between one or more products simultaneously via the DMX transmitter (not included). There are two options to choose from: Professional XLR DMX and Home WIFI DMX. (Remote control included).

# Ambients

---

