

Products / Lamps / The Factory Lamp S

The factory lamp s

by Ramón Esteve

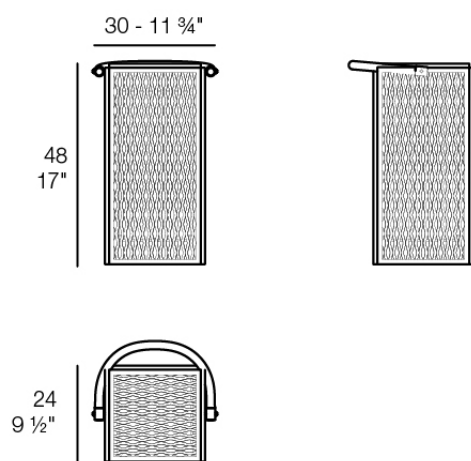
The Factory Collection, designed by Ramon Esteve for Vondom, is **characterized by the aluminum profile and the “deployé” mesh**. Discover this collection of aluminium furniture composed of a modular sofa, an armchair, a lounger, a side table, a lamp, a coffee table, a high table, chairs, and a room divider.



Info

Description

Designer lamp. The deployed mesh is made from aluminum, and the inner lighting is made out of polyethylene resin manufactured by rotational molding. Suitable for an interior and an outdoor use. Available in various finishes.



THE FACTORY Lámpara 30 x 24 x 48
THE FACTORY Puff S 11 3/4 x 9 1/2 x 19"

Finishes

lighting

RGBW LED BATTERY

Ref. 54612Y



traffic gray



ecru



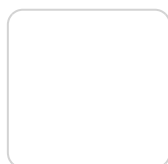
crema



black



castoro fiber



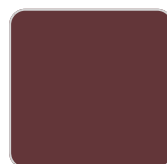
white



bronze



modo green



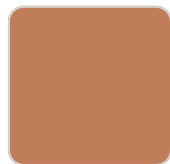
purjai red



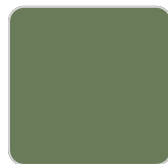
almond



notte blue



melon



pickle



british gray



red

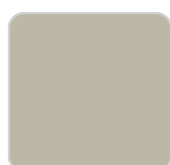
Unit with internal lighting with battery-powered RGBW LED technology. Includes charger and remote control for switching colors and charger. Available only in matte ice white finish.

RGBW LED DMX BATTERY

Ref. 54612DY



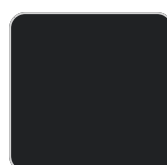
traffic gray



ecru



crema



black



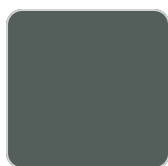
castoro fiber



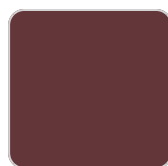
white



bronze



modo green



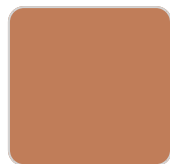
purjai red



almond



notte blue



melon



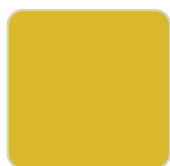
pickle



british gray



red



mostaza

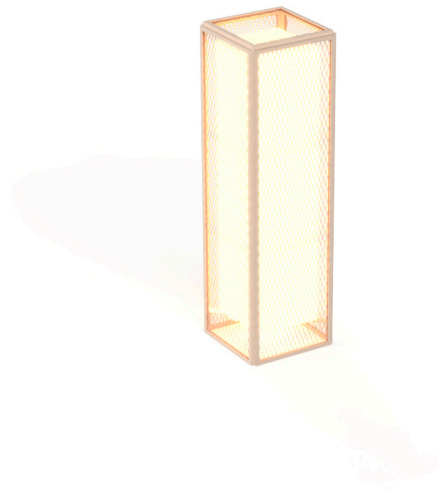
Unit with internal lighting with RGBW LED technology and remote control unit for switching colors. Also controlled by DMX-1024 (wireless), enabling communication between one or more products simultaneously via the DMX transmitter (not included). There are two options to choose from: Professional XLR DMX and Home WIFI DMX. (Remote control included).

Products / Lamps / The Factory Lamp M

The factory lamp m

by Ramón Esteve

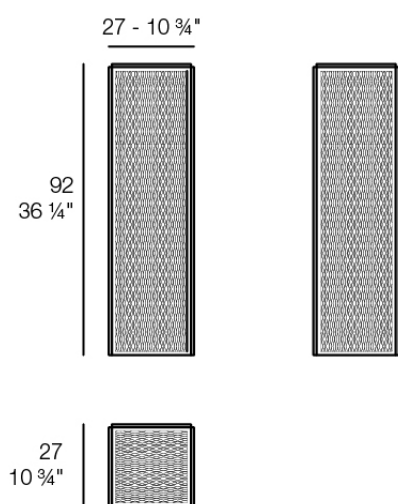
The Factory Collection, designed by Ramon Esteve for Vondom, is **characterized by the aluminum profile and the “deployé” mesh**. Discover this collection of aluminium furniture composed of a modular sofa, an armchair, a lounger, a side table, a lamp, a coffee table, a high table, chairs, and a room divider.



Info

Description

Designer lamp. The deployed mesh is made from aluminum, and the inner lighting is made out of polyethylene resin manufactured by rotational molding. Suitable for an interior and an outdoor use. Available in various finishes.



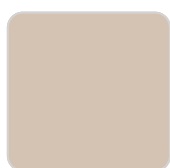
THE FACTORY Lámpara 27 x 27 x 92
THE FACTORY Puff S 10³/₄ x 10³/₄ x 36¹/₄"

Finishes

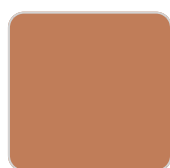
lighting

LIGHT

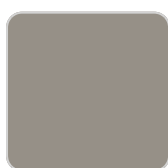
Ref. 54615W



crema



melon



castoro fiber



red



ecru



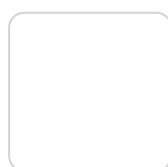
bronze



black



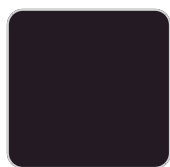
modo green



white



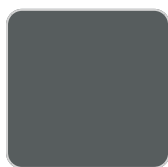
purjai red



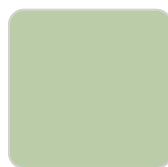
notte blue



pickle



traffic gray



almond

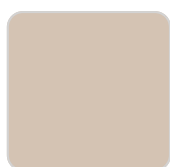


british gray

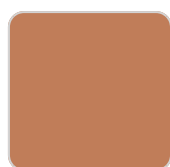
White internally lit unit with LED technology. Available only in matte ice white finish.

RGBW LED

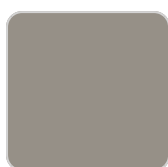
Ref. 54615L



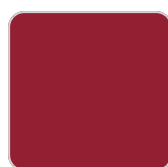
crema



melon



castoro fiber



red



ecru



Unit with internal lighting with RGBW LED technology and remote control unit for switching colors. Available only in matte ice white finish. Remote control included.

RGBW LED DMX

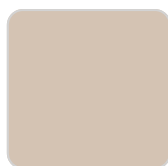
Ref. 54615D



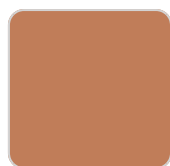
Unit with internal lighting with RGBW LED technology and remote control unit for switching colors. Also controlled by DMX-1024 (wireless), enabling communication between one or more products simultaneously via the DMX transmitter (not included). There are two options to choose from: Professional XLR DMX and Home WIFI DMX. (Remote control included). Optional battery

RGBW LED BATTERY

Ref. 54615Y



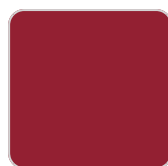
crema



melon



castoro fiber



red



ecru



bronze



black



modo green



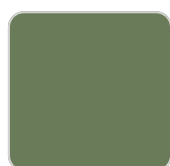
white



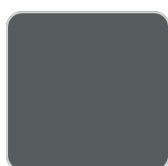
purjai red



notte blue



pickle



traffic gray



almond



british gray

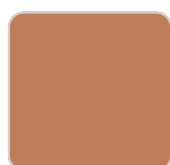
Unit with internal lighting with battery-powered RGBW LED technology. Includes charger and remote control for switching colors and charger. Available only in matte ice white finish.

RGBW LED DMX BATTERY

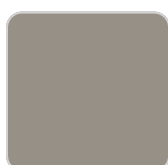
Ref. 54615DY



crema



melon



castoro fiber



red



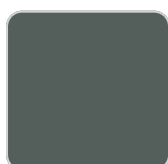
ecru



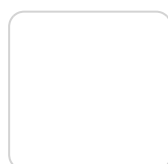
bronze



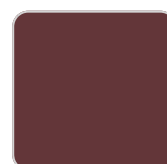
black



modo green



white



purjai red



notte blue



pickle



traffic gray



almond



british gray

notte blue

pickle

traffic gray

almond

british gray

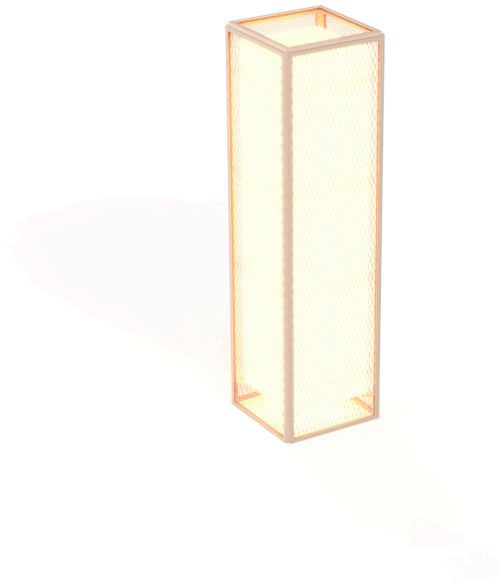
Unit with internal lighting with RGBW LED technology and remote control unit for switching colors. Also controlled by DMX-1024 (wireless), enabling communication between one or more products simultaneously via the DMX transmitter (not included). There are two options to choose from: Professional XLR DMX and Home WIFI DMX. (Remote control included).

Products / Lamps / The Factory Lamp L

The factory lamp I

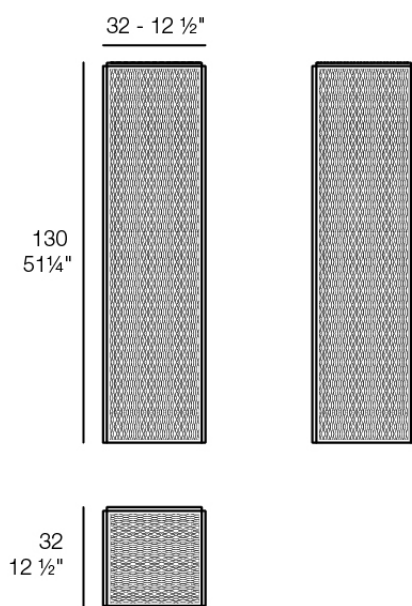
by Ramón Esteve

The Factory Collection, designed by Ramon Esteve for Vondom, is **characterized by the aluminum profile and the “deployé” mesh**. Discover this collection of aluminium furniture composed of a modular sofa, an armchair, a lounger, a side table, a lamp, a coffee table, a high table, chairs, and a room divider.



Info

Description



THE FACTORY Lámpara 31x31x120
THE FACTORY Puff S 12 1/4 x 12 1/4 x 51 1/4"

Finishes

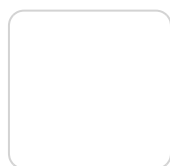
lighting

LIGHT

Ref. 54621W



purjai red



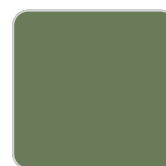
white



notte blue



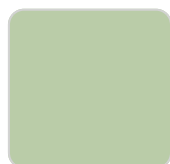
british gray



pickle



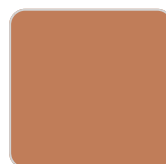
traffic gray



almond



crema



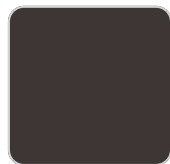
melon



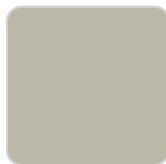
castoro fiber



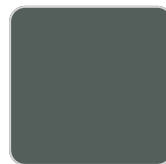
red



bronze



ecru



modo green

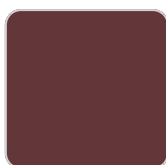


black

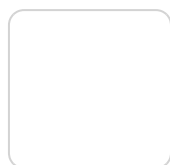
White internally lit unit with LED technology. Available only in matte ice white finish.

RGBW LED

Ref. 54621L



purjai red



white



notte blue



british gray



pickle



Unit with internal lighting with RGBW LED technology and remote control unit for switching colors. Available only in matte ice white finish. Remote control included.

RGBW LED DMX

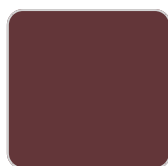
Ref. 54621D



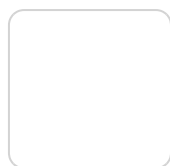
Unit with internal lighting with RGBW LED technology and remote control unit for switching colors. Also controlled by DMX-1024 (wireless), enabling communication between one or more products simultaneously via the DMX transmitter (not included). There are two options to choose from: Professional XLR DMX and Home WIFI DMX. (Remote control included). Optional battery

RGBW LED BATTERY

Ref. 54621Y



purjai red



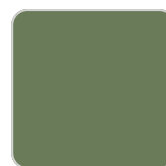
white



notte blue



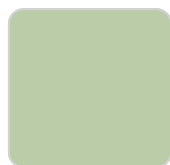
british gray



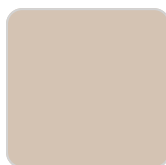
pickle



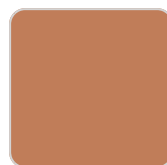
traffic gray



almond



crema



melon



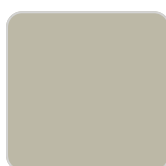
castoro fiber



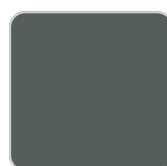
red



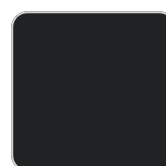
bronze



ecru



modo green



black

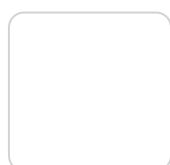
Unit with internal lighting with battery-powered RGBW LED technology. Includes charger and remote control for switching colors and charger. Available only in matte ice white finish.

RGBW LED DMX BATTERY

Ref. 54621DY



purjai red



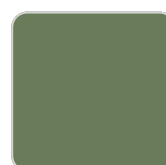
white



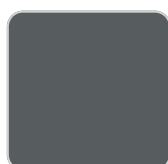
notte blue



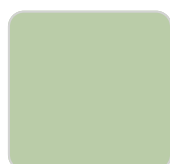
british gray



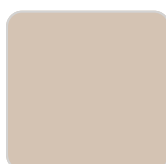
pickle



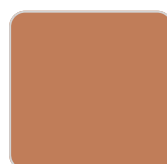
traffic gray



almond



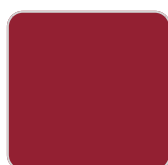
crema



melon



castoro fiber



red



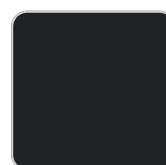
bronze



ecru



modo green



black

red

bronze

ecru

modo green

black

Unit with internal lighting with RGBW LED technology and remote control unit for switching colors. Also controlled by DMX-1024 (wireless), enabling communication between one or more products simultaneously via the DMX transmitter (not included). There are two options to choose from: Professional XLR DMX and Home WIFI DMX. (Remote control included).

Ambients

