

Products / High Tables / Frame Bar Table 50x50x100

Frame bar table 50x50x100

by Ramón Esteve

Frame, outdoor collection by Ramon Esteve, comes from generating serene and timeless shapes using the framework as elementary geometry. The endless possibilities offered by the material using advanced technology, was the motivation to explore the limits.

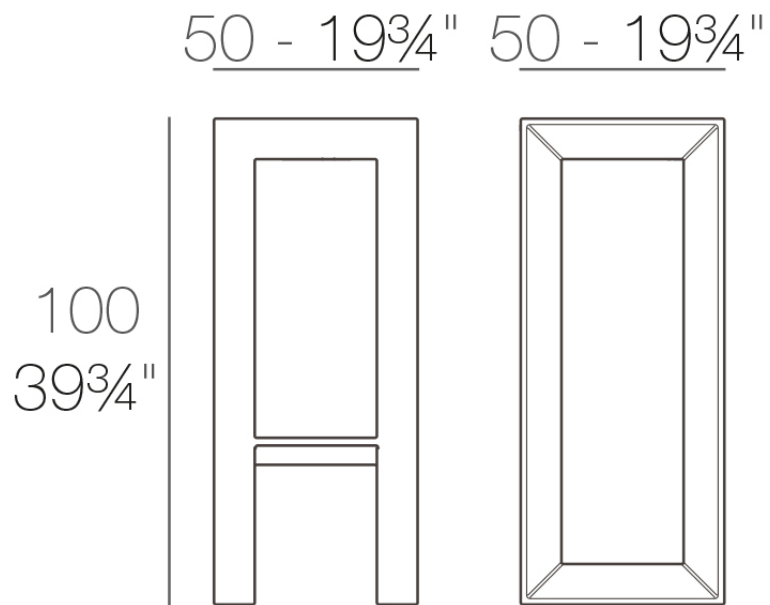


Info

Description

Made of polyethylene resin by rotational moulding. 100% Recyclable. Item suitable for indoor and outdoor use. Available in different finishes.

Weight: 10 Kg



FRAME Mesa Alta

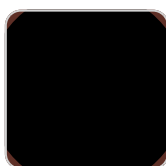
FRAME Bar Table

Finishes

finishes

BASIC

Ref. 54075



purjai red



white



black



steel



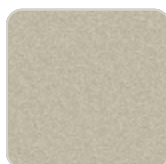
red



khaki



taupe



ecru



beige



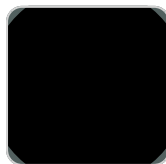
orange



notte blue



crema



green

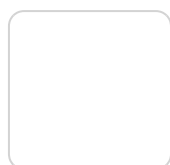
Matt Polyethylene

LACQUERED

Ref. 54075F



purjai red



white



black



bronze



steel



anthracite



champany



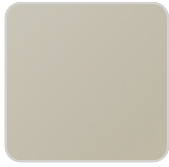
red



khaki



taupe



ecru



beige

Lacquered Polyethylene

Ambients

