

Products / Dining Tables / Frame Aluminium Table 160x100x74

Frame aluminium table 160x100x74

by Ramón Esteve

Frame, outdoor collection by Ramon Esteve, comes from generating serene and timeless shapes using the framework as elementary geometry. The endless possibilities offered by the material using advanced technology, was the motivation to explore the limits.

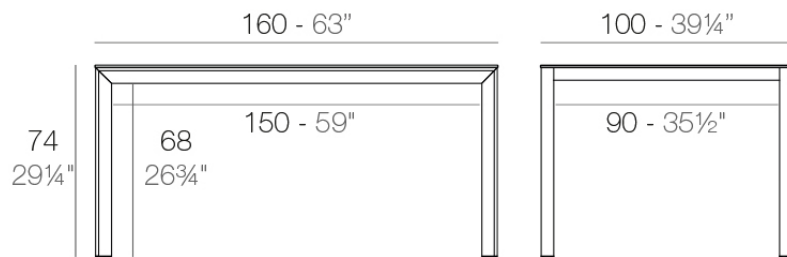


Info

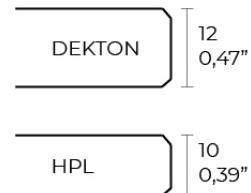
Description

Extruded aluminum with cast lacquered aluminum base. HPL Table top ó Dekton Table top. Item suitable for indoor and outdoor use. HPL Table top.

Weight: 32.65 Kg



FRAME Mesa 160x100cm
FRAME Dinning Table 63"x39 1/4"



Finishes

finishes

LACQUERED

Ref. 54240F



white



black



ecru

Lacquered aluminium profile.

LACQUERED + SOLID CORE

Ref. 54240FB



white

Lacquered aluminium profile.

LACQUERED + DEKTON

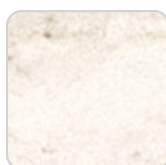
Ref. 54240FM



kelya



entzo



danae

Lacquered aluminium profile.

Products / Dining Tables / Frame Aluminium Table 200x100x74

Frame aluminium table 200x100x74

by Ramón Esteve

Frame, outdoor collection by Ramon Esteve, comes from generating serene and timeless shapes using the framework as elementary geometry. The endless possibilities offered by the material using advanced technology, was the motivation to explore the limits.

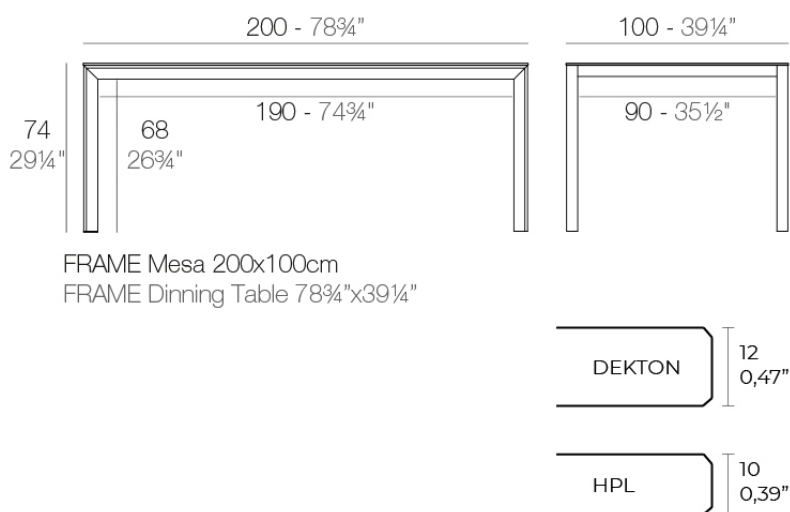


Info

Description

Extruded aluminum with cast lacquered aluminum base. HPL Table top ó Dekton Table top. Item suitable for indoor and outdoor use. HPL Table top.

Weight: 39.15 Kg



Finishes

finishes

LACQUERED

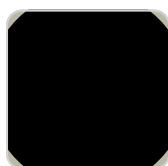
Ref. 54241F



white



black



ecru

Lacquered aluminium profile.

LACQUERED + SOLID CORE

Ref. 54241FB



white



melocoton



navy

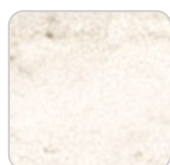
Lacquered aluminium profile.

LACQUERED + DEKTON

Ref. 54241FM



entzo



danae



kelya

Lacquered aluminium profile.

Products / Dining Tables / Frame Aluminium Table 300x120x74

Frame aluminium table 300x120x74

by Ramón Esteve

Frame, outdoor collection by Ramon Esteve, comes from generating serene and timeless shapes using the framework as elementary geometry. The endless possibilities offered by the material using advanced technology, was the motivation to explore the limits.

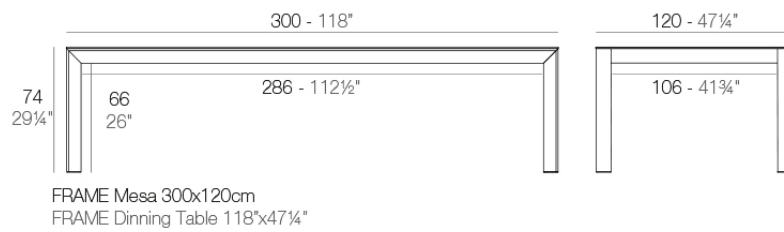


Info

Description

Extruded aluminum with cast lacquered aluminum base. HPL Table top ó Dekton Table top. Item suitable for indoor and outdoor use. HPL Table top.

Weight: 70.7 Kg



Finishes

finishes

LACQUERED

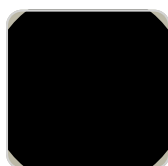
Ref. 54242F



white



black



ecru

Lacquered aluminium profile.

LACQUERED + SOLID CORE

Ref. 54242FB



white

Lacquered aluminium profile.

Ambients

