

Medium stool

Francesc Rifé

2022

A collection fully rational. A sophisticated body rests on a visible structure, interpreted as the minimalist element of the whole. With no superfluous details, RC Metal is made of black metal. The collection keeps growing and presents a great range of formats: chairs, armchairs, stools in two heights, sofas, tables and benches. All the typologies are connected through a language of ergonomic and wide forms. Its main feature is a curved backrest that extends in the form of armrests and embraces the user.

Interior and industrial designer, Francesc Rifé founds his own studio in Barcelona in 1994. Influenced by minimalism and following a familiar tradition linked to craftsmanship, his work focuses on ways of approaching spatial order and proportion. Currently, Rifé leads a team of professionals from several design fields that has won several awards: Contract World, Red Dot, HiP in Chicago, ICFF Editors, FAD, Delta and several ASCER awards.





Ref: 430001

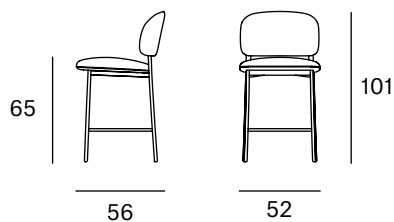
Materials

SEAT: Wood covered with polyurethane foam rubber of D. 32 kg and Fiber of 150 gr.

BACK: Curved beech wood board covered with polyurethane foam rubber D. 32 kg.

LEGS: Black lacquered metal F1.

Dimensions



ORIGIN 100% Made in Spain

WARRANTY 5 years

There is a five-year warranty against manufacturing defects (materials and workmanship). Wear and tear and damage to the product are not covered by this warranty. User claims under this warranty must be submitted to the distributor of the product.

Finishes

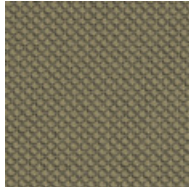
MADE TO ORDER

Upholstery Selection Blasco&Vila

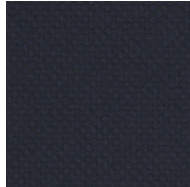
RIU Collection



61200

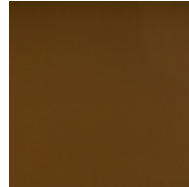


61201



66201

ECO Collection



Cognac



Mocca



Schwarz

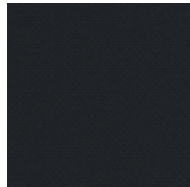
MAR Collection



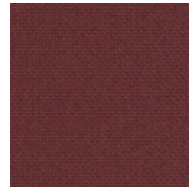
60112



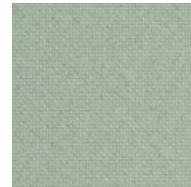
60110



60111



64196



68262

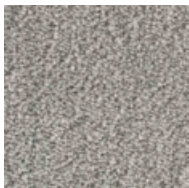


68182

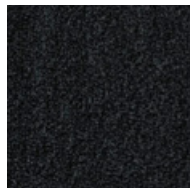
BIO Collection



Ivory



Steel



Onyx

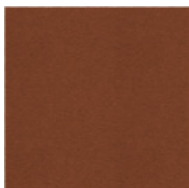


Forest

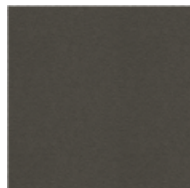
LUZ Collection



156



91



131



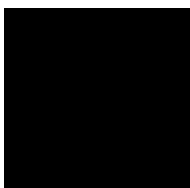
510

CUSTOM Endless customisation

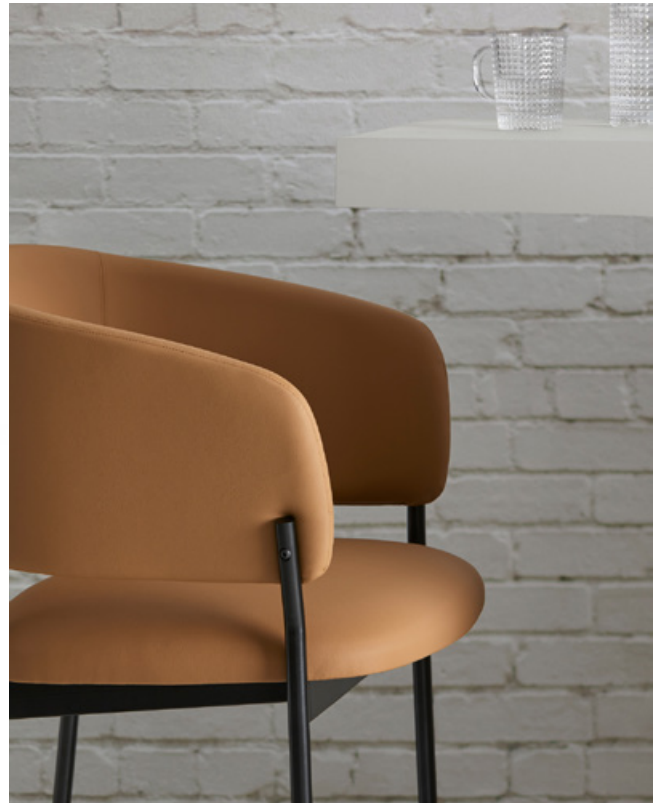
We can customise the product with any other upholstery:

Kvadrat
Gabriel
Camira
Sunbrella
Spradling
Crevin
etc.

Metal



Black



Ref: 530001

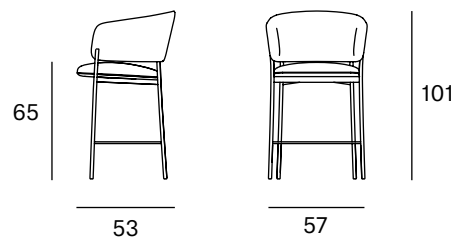
Materials

SEAT: Wood covered with polyurethane foam rubber of D. 32 kg and Fiber of 150 gr.

BACK: Curved beech wood board covered with polyurethane foam rubber D. 32 kg.

LEGS: Black lacquered metal F1.

Dimensions



ORIGIN 100% Made in Spain

WARRANTY 5 years

There is a five-year warranty against manufacturing defects (materials and workmanship). Wear and tear and damage to the product are not covered by this warranty. User claims under this warranty must be submitted to the distributor of the product.

Finishes

MADE TO ORDER

Upholstery Selection Blasco&Vila

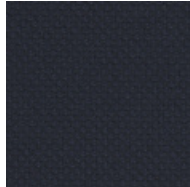
RIU Collection



61200

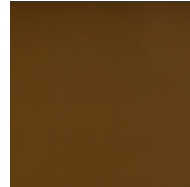


61201



66201

ECO Collection



Cognac



Mocca



Schwarz

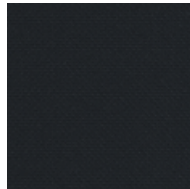
MAR Collection



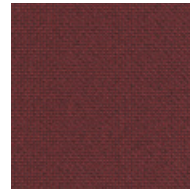
60112



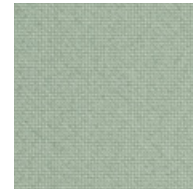
60110



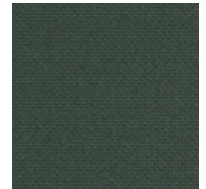
60111



64196



68262

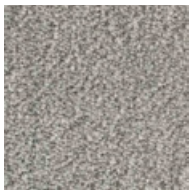


68182

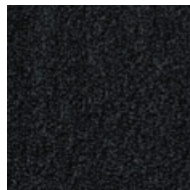
BIO Collection



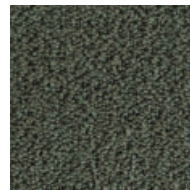
Ivory



Steel



Onyx

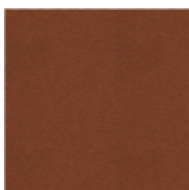


Forest

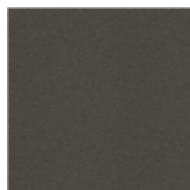
LUZ Collection



156



91



131



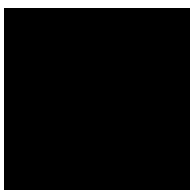
510

CUSTOM Endless customisation

We can customise the product with any other upholstery:

Kvadrat
Gabriel
Camira
Sunbrella
Spradling
Crevin
etc.

Metal



Black

High stool

Francesc Rifé

2017

A collection fully rational. A sophisticated body rests on a visible structure, interpreted as the minimalist element of the whole. With no superfluous details, RC Metal is made of black metal. The collection keeps growing and presents a great range of formats: chairs, armchairs, stools in two heights, sofas, tables and benches. All the typologies are connected through a language of ergonomic and wide forms. Its main feature is a curved backrest that extends in the form of armrests and embraces the user.

Interior and industrial designer, Francesc Rifé founds his own studio in Barcelona in 1994. Influenced by minimalism and following a familiar tradition linked to craftsmanship, his work focuses on ways of approaching spatial order and proportion. Currently, Rifé leads a team of professionals from several design fields that has won several awards: Contract World, Red Dot, HiP in Chicago, ICFF Editors, FAD, Delta and several ASCER awards.





Ref: 430000

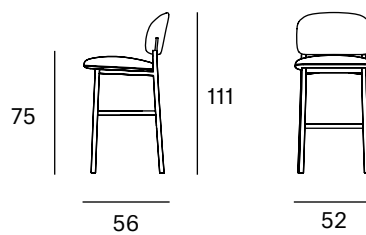
Materials

SEAT: Wood covered with polyurethane foam rubber of D. 32 kg and Fiber of 150 gr.

BACK: Curved beech wood board covered with polyurethane foam rubber D. 32 kg.

LEGS: Black lacquered metal F1.

Dimensions



ORIGIN 100% Made in Spain

WARRANTY 5 years

There is a five-year warranty against manufacturing defects (materials and workmanship). Wear and tear and damage to the product are not covered by this warranty. User claims under this warranty must be submitted to the distributor of the product.

Finishes

MADE TO ORDER

Upholstery Selection Blasco&Vila

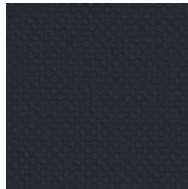
RIU Collection



61200

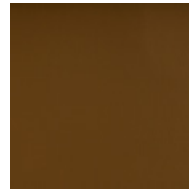


61201



66201

ECO Collection



Cognac



Mocca



Schwarz

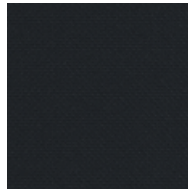
MAR Collection



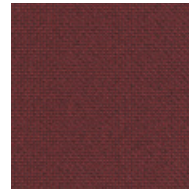
60112



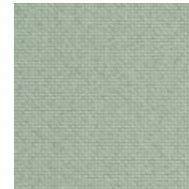
60110



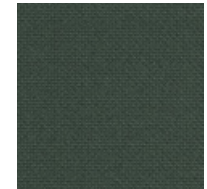
60111



64196

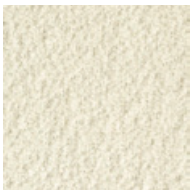


68262

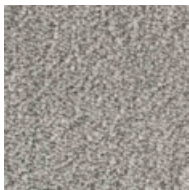


68182

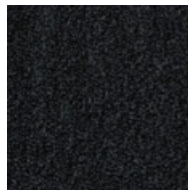
BIO Collection



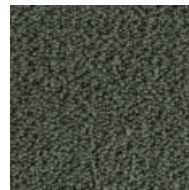
Ivory



Steel



Onyx

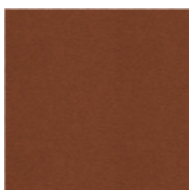


Forest

LUZ Collection



156



91



131



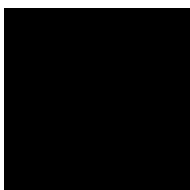
510

CUSTOM Endless customisation

We can customise the product with any other upholstery:

Kvadrat
Gabriel
Camira
Sunbrella
Spradling
Crevin
etc.

Metal



Black



Ref: 530000

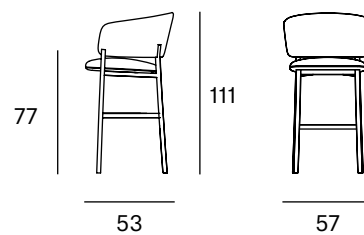
Materials

SEAT: Wood covered with polyurethane foam rubber of D. 32 kg and Fiber of 150 gr.

BACK: Curved beech wood board covered with polyurethane foam rubber D. 32 kg.

LEGS: Black lacquered metal F1.

Dimensions



ORIGIN 100% Made in Spain

WARRANTY 5 years

There is a five-year warranty against manufacturing defects (materials and workmanship). Wear and tear and damage to the product are not covered by this warranty. User claims under this warranty must be submitted to the distributor of the product.

Finishes

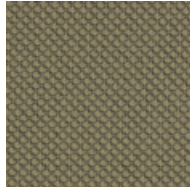
MADE TO ORDER

Upholstery Selection Blasco&Vila

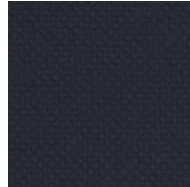
RIU Collection



61200



61201



66201

ECO Collection



Cognac



Mocca



Schwarz

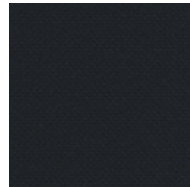
MAR Collection



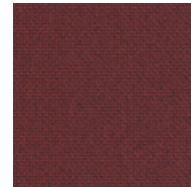
60112



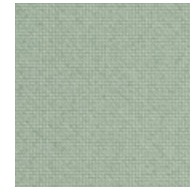
60110



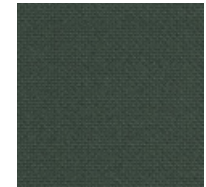
60111



64196



68262

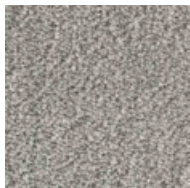


68182

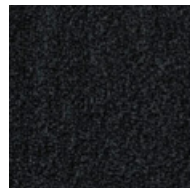
BIO Collection



Ivory



Steel



Onyx

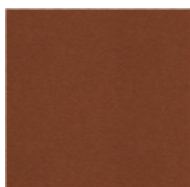


Forest

LUZ Collection



156



91



131



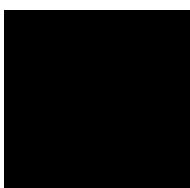
510

CUSTOM Endless customisation

We can customise the product with any other upholstery:

Kvadrat
Gabriel
Camira
Sunbrella
Spradling
Crevin
etc.

Metal



Black