

## High stool

**Francesc Rifé****2021**

---

The industrial character of Fosca chair is the result of a framework of rigorous metal lines and an almost naked seat and backrest. Lightweight pieces that come in various finishes, capable of connecting with both residential and contract and hospitality spaces. Trying to be as rational as possible, the collection grows and is presented in a wide range of upholsteries and typologies: chairs, armchairs, high and medium stools and stools without backrest and with handle in three different heights.

Interior and industrial designer, Francesc Rifé founds his own studio in Barcelona in 1994. Influenced by minimalism and following a familiar tradition linked to craftsmanship, his work focuses on ways of approaching spatial order and proportion. Currently, Rifé leads a team of professionals from several design fields that has won several awards: Contract World, Red Dot, HiP in Chicago, ICFF Editors, FAD, Delta and several ASCER awards.





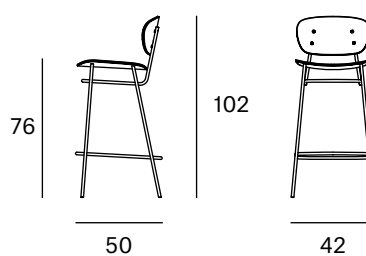
Ref: 200100

### Materials

SEAT & BACK: Curved ash wood board. Natural and black.

LEGS: Black lacquered metal F1.

### Dimensions



**ORIGIN** 100% Made in Spain

**WARRANTY** 5 years

There is a five-year warranty against manufacturing defects (materials and workmanship). Wear and tear and damage to the product are not covered by this warranty. User claims under this warranty must be submitted to the distributor of the product.

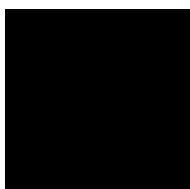
# Finishes

---

MADE TO ORDER

---

## Metal

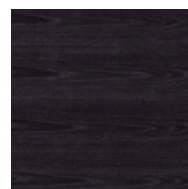


Black

## Ash Wood



Natural



Black



Ref: 200101

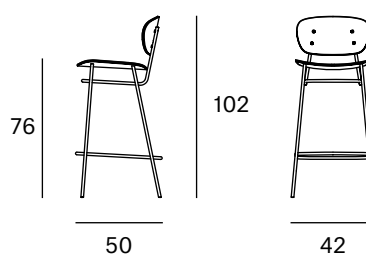
### Materials

SEAT: Curved ash wood board covered with Fiber of 150 gr. Natural and black.

BACK: Curved ash wood board. Natural and black.

LEGS: Black lacquered metal F1.

### Dimensions



**ORIGIN** 100% Made in Spain

**WARRANTY** 5 years

There is a five-year warranty against manufacturing defects (materials and workmanship). Wear and tear and damage to the product are not covered by this warranty. User claims under this warranty must be submitted to the distributor of the product.

# Finishes

MADE TO ORDER

## Upholstery Selection Blasco&Vila

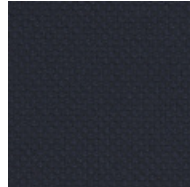
### RIU Collection



61200

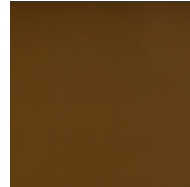


61201



66201

### ECO Collection



Cognac



Mocca



Schwarz

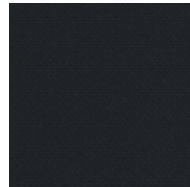
### MAR Collection



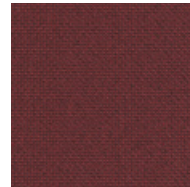
60112



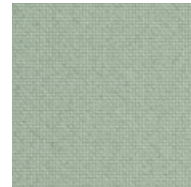
60110



60111



64196



68262

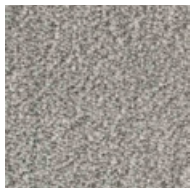


68182

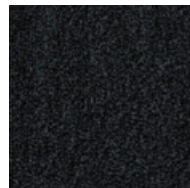
### BIO Collection



Ivory



Steel



Onyx

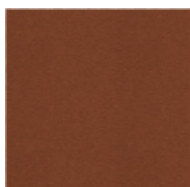


Forest

### LUZ Collection



156



91



131



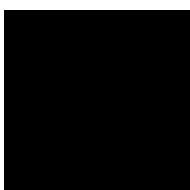
510

### CUSTOM Endless customisation

We can customise the product with any other upholstery:

Kvadrat  
Gabriel  
Camira  
Sunbrella  
Spradling  
Crevin  
*etc.*

### Metal

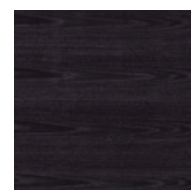


Black

### Ash Wood



Natural



Black



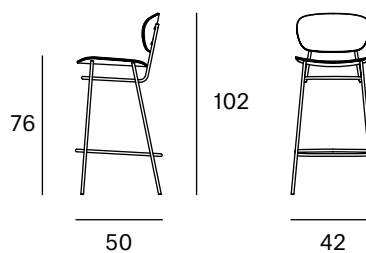
Ref: 200102

### Materials

SEAT & BACK: Curved ash wood board covered with Fiber of 150 gr. Natural and black.

LEGS: Black lacquered metal F1.

### Dimensions



**ORIGIN** 100% Made in Spain

**WARRANTY** 5 years

There is a five-year warranty against manufacturing defects (materials and workmanship). Wear and tear and damage to the product are not covered by this warranty. User claims under this warranty must be submitted to the distributor of the product.

# Finishes

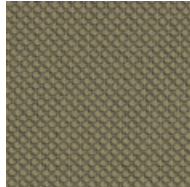
MADE TO ORDER

## Upholstery Selection Blasco&Vila

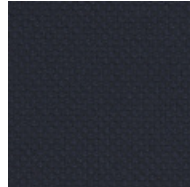
### RIU Collection



61200

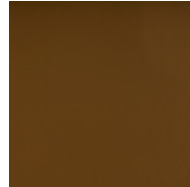


61201



66201

### ECO Collection



Cognac



Mocca



Schwarz

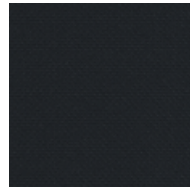
### MAR Collection



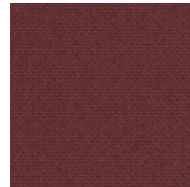
60112



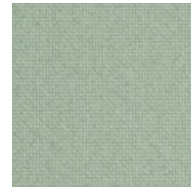
60110



60111



64196



68262

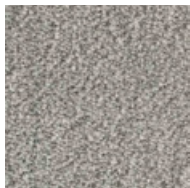


68182

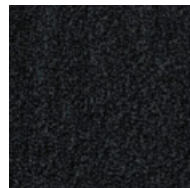
### BIO Collection



Ivory



Steel



Onyx

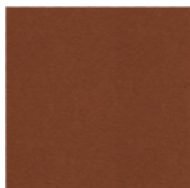


Forest

### LUZ Collection



156



91



131



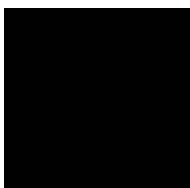
510

### CUSTOM Endless customisation

We can customise the product with any other upholstery:

Kvadrat  
Gabriel  
Camira  
Sunbrella  
Spradling  
Crevin  
etc.

### Metal

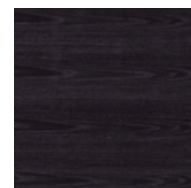


Black

### Ash Wood



Natural



Black

## High handle stool

**Francesc Rifé****2022**

---

The industrial character of Fosca chair is the result of a framework of rigorous metal lines and an almost naked seat and backrest. Lightweight pieces that come in various finishes, capable of connecting with both residential and contract and hospitality spaces. Trying to be as rational as possible, the collection grows and is presented in a wide range of upholsteries and typologies: chairs, armchairs, high and medium stools and stools without backrest and with handle in three different heights.

Interior and industrial designer, Francesc Rifé founds his own studio in Barcelona in 1994. Influenced by minimalism and following a familiar tradition linked to craftsmanship, his work focuses on ways of approaching spatial order and proportion. Currently, Rifé leads a team of professionals from several design fields that has won several awards: Contract World, Red Dot, HiP in Chicago, ICFF Editors, FAD, Delta and several ASCER awards.







Ref: 200110

---

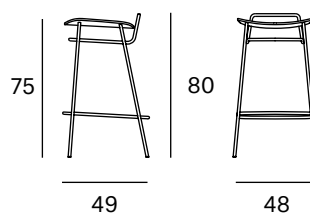
**Materials**

SEAT: Curved ash wood board. Natural and black.

LEGS & HANDLE: Black lacquered metal F1.

---

**Dimensions**



---

**ORIGIN** 100% Made in Spain

**WARRANTY** 5 years

There is a five-year warranty against manufacturing defects (materials and workmanship). Wear and tear and damage to the product are not covered by this warranty. User claims under this warranty must be submitted to the distributor of the product.

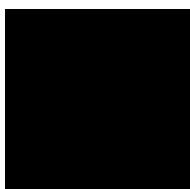
# Finishes

---

MADE TO ORDER

---

## Metal

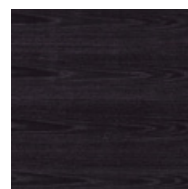


Black

## Ash Wood



Natural



Black



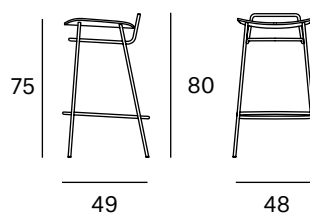
Ref: 200111

### Materials

SEAT: Curved ash wood board covered with Fiber of 150 gr. Natural and black.

LEGS & HANDLE: Black lacquered metal F1.

### Dimensions



**ORIGIN** 100% Made in Spain

**WARRANTY** 5 years

There is a five-year warranty against manufacturing defects (materials and workmanship). Wear and tear and damage to the product are not covered by this warranty. User claims under this warranty must be submitted to the distributor of the product.

# Finishes

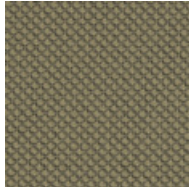
MADE TO ORDER

## Upholstery Selection Blasco&Vila

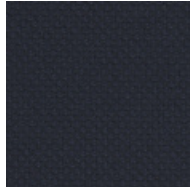
### RIU Collection



61200

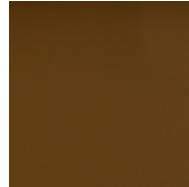


61201



66201

### ECO Collection



Cognac



Mocca



Schwarz

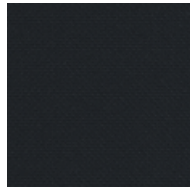
### MAR Collection



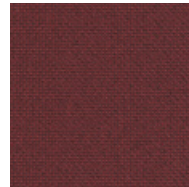
60112



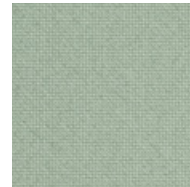
60110



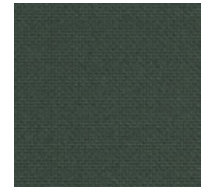
60111



64196



68262

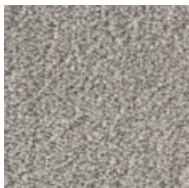


68182

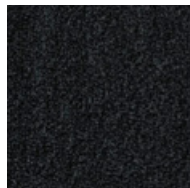
### BIO Collection



Ivory



Steel



Onyx

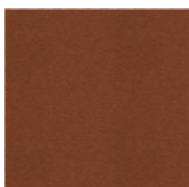


Forest

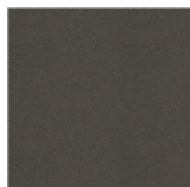
### LUZ Collection



156



91



131



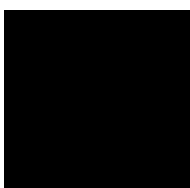
510

### CUSTOM Endless customisation

We can customise the product with any other upholstery:

Kvadrat  
Gabriel  
Camira  
Sunbrella  
Spradling  
Crevin  
*etc.*

### Metal

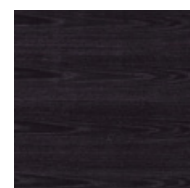


Black

### Ash Wood



Natural



Black

---

## Medium stool

**Francesc Rifé****2022**

---

The industrial character of Fosca chair is the result of a framework of rigorous metal lines and an almost naked seat and backrest. Lightweight pieces that come in various finishes, capable of connecting with both residential and contract and hospitality spaces. Trying to be as rational as possible, the collection grows and is presented in a wide range of upholsteries and typologies: chairs, armchairs, high and medium stools and stools without backrest and with handle in three different heights.

Interior and industrial designer, Francesc Rifé founds his own studio in Barcelona in 1994. Influenced by minimalism and following a familiar tradition linked to craftsmanship, his work focuses on ways of approaching spatial order and proportion. Currently, Rifé leads a team of professionals from several design fields that has won several awards: Contract World, Red Dot, HiP in Chicago, ICFF Editors, FAD, Delta and several ASCER awards.





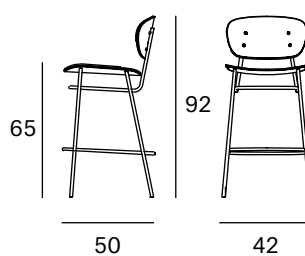
Ref: 200103

### Materials

SEAT & BACK: Curved ash wood board.  
Natural and black.

LEGS: Black lacquered metal F1.

### Dimensions



**ORIGIN** 100% Made in Spain

**WARRANTY** 5 years

There is a five-year warranty against manufacturing defects (materials and workmanship). Wear and tear and damage to the product are not covered by this warranty. User claims under this warranty must be submitted to the distributor of the product.

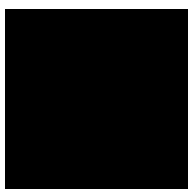
# Finishes

---

MADE TO ORDER

---

## Metal

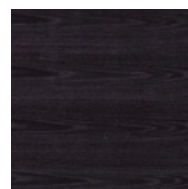


Black

## Ash Wood



Natural



Black



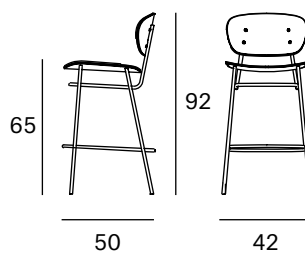
Ref: 200104

### Materials

SEAT: Curved ash wood board covered with Fiber of 150 gr. Natural and black.

BACK: Curved ash wood board. Natural and black. LEGS: Black lacquered metal F1.

### Dimensions



**ORIGIN** 100% Made in Spain

**WARRANTY** 5 years

There is a five-year warranty against manufacturing defects (materials and workmanship). Wear and tear and damage to the product are not covered by this warranty. User claims under this warranty must be submitted to the distributor of the product.



# Finishes

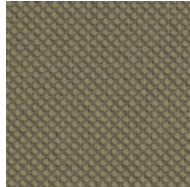
MADE TO ORDER

## Upholstery Selection Blasco&Vila

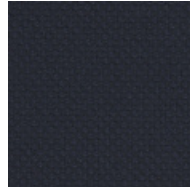
### RIU Collection



61200

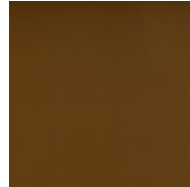


61201



66201

### ECO Collection



Cognac



Mocca



Schwarz

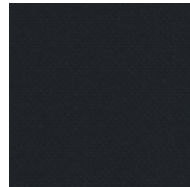
### MAR Collection



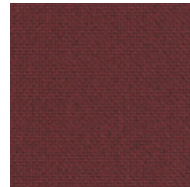
60112



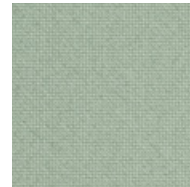
60110



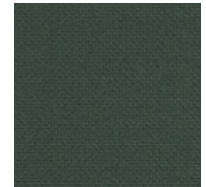
60111



64196



68262

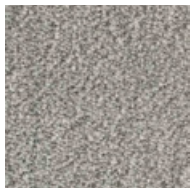


68182

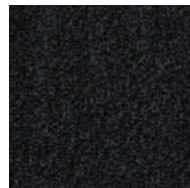
### BIO Collection



Ivory



Steel



Onyx

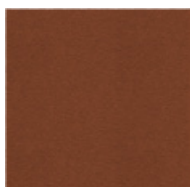


Forest

### LUZ Collection



156



91



131



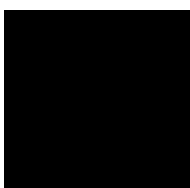
510

### CUSTOM Endless customisation

We can customise the product with any other upholstery:

Kvadrat  
Gabriel  
Camira  
Sunbrella  
Spradling  
Crevin  
*etc.*

### Metal

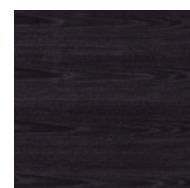


Black

### Ash Wood



Natural



Black



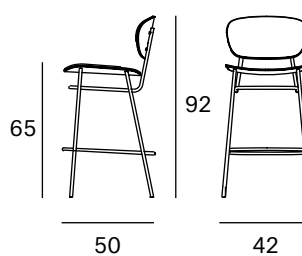
Ref: 200105

### Materials

SEAT & BACK: Curved ash wood board covered with Fiber of 150 gr. Natural and black.

LEGS: Black lacquered metal F1.

### Dimensions



**ORIGIN** 100% Made in Spain

**WARRANTY** 5 years

There is a five-year warranty against manufacturing defects (materials and workmanship). Wear and tear and damage to the product are not covered by this warranty. User claims under this warranty must be submitted to the distributor of the product.

# Finishes

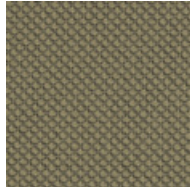
MADE TO ORDER

## Upholstery Selection Blasco&Vila

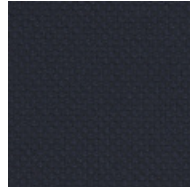
### RIU Collection



61200



61201

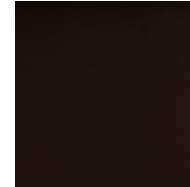


66201

### ECO Collection



Cognac



Mocca



Schwarz

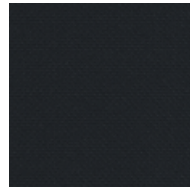
### MAR Collection



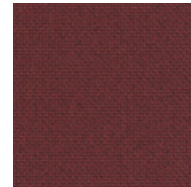
60112



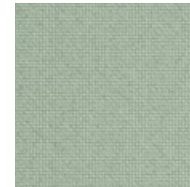
60110



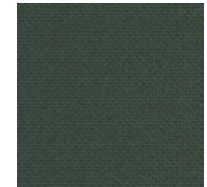
60111



64196



68262

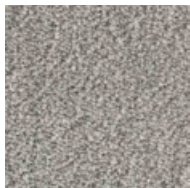


68182

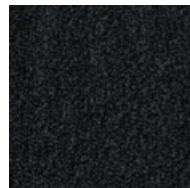
### BIO Collection



Ivory



Steel



Onyx

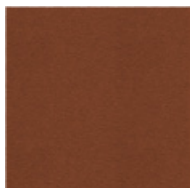


Forest

### LUZ Collection



156



91



131



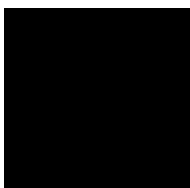
510

### CUSTOM Endless customisation

We can customise the product with any other upholstery:

Kvadrat  
Gabriel  
Camira  
Sunbrella  
Spradling  
Crevin  
etc.

### Metal

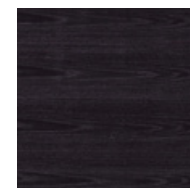


Black

### Ash Wood



Natural



Black

---

## Medium handle stool

**Francesc Rifé****2022**

---

The industrial character of Fosca chair is the result of a framework of rigorous metal lines and an almost naked seat and backrest. Lightweight pieces that come in various finishes, capable of connecting with both residential and contract and hospitality spaces. Trying to be as rational as possible, the collection grows and is presented in a wide range of upholsteries and typologies: chairs, armchairs, high and medium stools and stools without backrest and with handle in three different heights.

Interior and industrial designer, Francesc Rifé founds his own studio in Barcelona in 1994. Influenced by minimalism and following a familiar tradition linked to craftsmanship, his work focuses on ways of approaching spatial order and proportion. Currently, Rifé leads a team of professionals from several design fields that has won several awards: Contract World, Red Dot, HiP in Chicago, ICFF Editors, FAD, Delta and several ASCER awards.





Ref: 200108

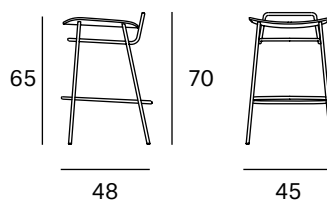
---

### Materials

SEAT: Curved ash wood board. Natural and black.

LEGS & HANDLE: Black lacquered metal F1.

### Dimensions



---

**ORIGIN** 100% Made in Spain

**WARRANTY** 5 years

There is a five-year warranty against manufacturing defects (materials and workmanship). Wear and tear and damage to the product are not covered by this warranty. User claims under this warranty must be submitted to the distributor of the product.

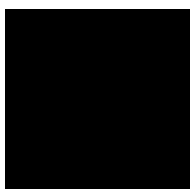
# Finishes

---

MADE TO ORDER

---

## Metal

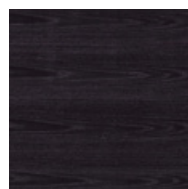


Black

## Ash Wood



Natural



Black



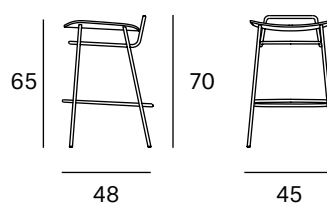
Ref: 200109

### Materials

SEAT: Curved ash wood board covered with Fiber of 150 gr. Natural and black.

LEGS & HANDLE: Black lacquered metal F1.

### Dimensions



**ORIGIN** 100% Made in Spain

**WARRANTY** 5 years

There is a five-year warranty against manufacturing defects (materials and workmanship). Wear and tear and damage to the product are not covered by this warranty. User claims under this warranty must be submitted to the distributor of the product.

# Finishes

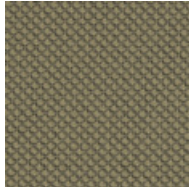
MADE TO ORDER

## Upholstery Selection Blasco&Vila

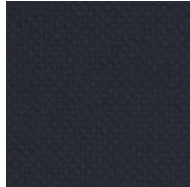
### RIU Collection



61200

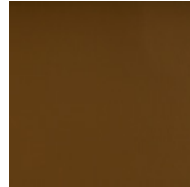


61201



66201

### ECO Collection



Cognac

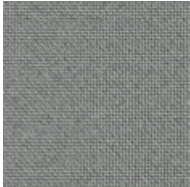


Mocca



Schwarz

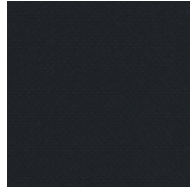
### MAR Collection



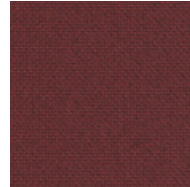
60112



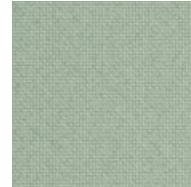
60110



60111



64196



68262

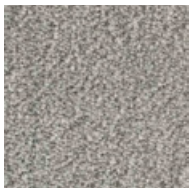


68182

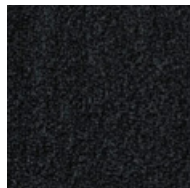
### BIO Collection



Ivory



Steel



Onyx

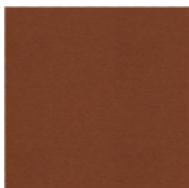


Forest

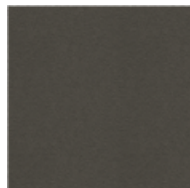
### LUZ Collection



156



91



131



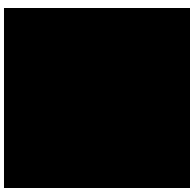
510

### CUSTOM Endless customisation

We can customise the product with any other upholstery:

Kvadrat  
Gabriel  
Camira  
Sunbrella  
Spradling  
Crevin  
*etc.*

## Metal

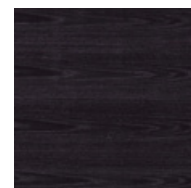


Black

## Ash Wood



Natural



Black



---

## Low handle stool

**Francesc Rifé****2022**

---

The industrial character of Fosca chair is the result of a framework of rigorous metal lines and an almost naked seat and backrest. Lightweight pieces that come in various finishes, capable of connecting with both residential and contract and hospitality spaces. Trying to be as rational as possible, the collection grows and is presented in a wide range of upholsteries and typologies: chairs, armchairs, high and medium stools and stools without backrest and with handle in three different heights.

Interior and industrial designer, Francesc Rifé founds his own studio in Barcelona in 1994. Influenced by minimalism and following a familiar tradition linked to craftsmanship, his work focuses on ways of approaching spatial order and proportion. Currently, Rifé leads a team of professionals from several design fields that has won several awards: Contract World, Red Dot, HiP in Chicago, ICFF Editors, FAD, Delta and several ASCER awards.





Ref: 200106

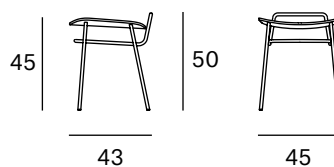
---

**Materials**

SEAT: Curved ash wood board. Natural and black.

LEGS & HANDLE: Black lacquered metal F1.

---

**Dimensions**

---

**ORIGIN** 100% Made in Spain**WARRANTY** 5 years

There is a five-year warranty against manufacturing defects (materials and workmanship). Wear and tear and damage to the product are not covered by this warranty. User claims under this warranty must be submitted to the distributor of the product.

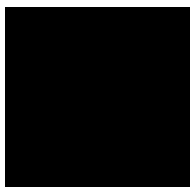
# Finishes

---

MADE TO ORDER

---

## Metal

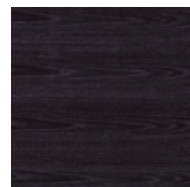


Black

## Ash Wood



Natural



Black



Ref: 200107

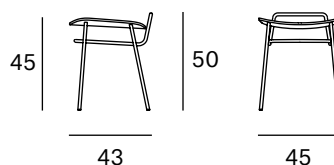
---

**Materials**

SEAT: Curved ash wood board covered with Fiber of 150 gr. Natural and black.

LEGS & HANDLE: Black lacquered metal F1.

---

**Dimensions**

---

**ORIGIN** 100% Made in Spain**WARRANTY** 5 years

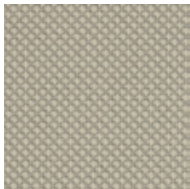
There is a five-year warranty against manufacturing defects (materials and workmanship). Wear and tear and damage to the product are not covered by this warranty. User claims under this warranty must be submitted to the distributor of the product.

# Finishes

MADE TO ORDER

## Upholstery Selection Blasco&Vila

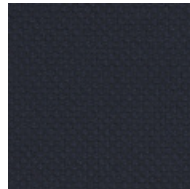
### RIU Collection



61200

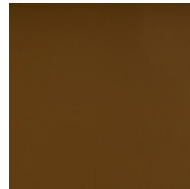


61201



66201

### ECO Collection



Cognac



Mocca



Schwarz

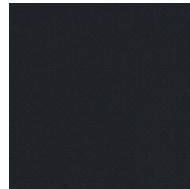
### MAR Collection



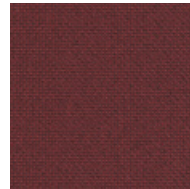
60112



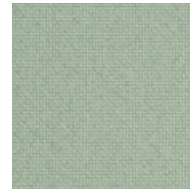
60110



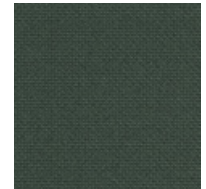
60111



64196



68262



68182

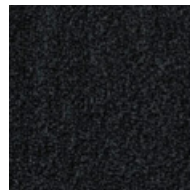
### BIO Collection



Ivory



Steel



Onyx

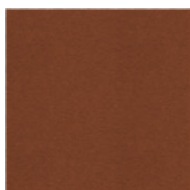


Forest

### LUZ Collection



156



91



131



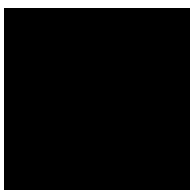
510

### CUSTOM Endless customisation

We can customise the product with any other upholstery:

Kvadrat  
Gabriel  
Camira  
Sunbrella  
Spradling  
Crevin  
etc.

### Metal

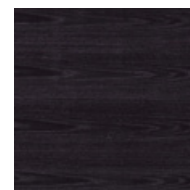


Black

### Ash Wood



Natural



Black