

Chair

Francesc Rifé

2021

The industrial character of Fosca chair is the result of a framework of rigorous metal lines and an almost naked seat and backrest. Lightweight pieces that come in various finishes, capable of connecting with both residential and contract and hospitality spaces. Trying to be as rational as possible, the collection grows and is presented in a wide range of upholsteries and typologies: chairs, armchairs, high and medium stools and stools without backrest and with handle in three different heights.

Interior and industrial designer, Francesc Rifé founds his own studio in Barcelona in 1994. Influenced by minimalism and following a familiar tradition linked to craftsmanship, his work focuses on ways of approaching spatial order and proportion. Currently, Rifé leads a team of professionals from several design fields that has won several awards: Contract World, Red Dot, HiP in Chicago, ICFF Editors, FAD, Delta and several ASCER awards.





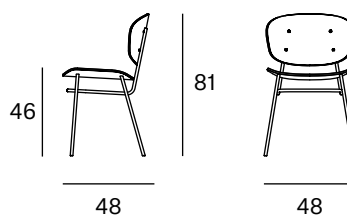
Ref: 200000

Materials

SEAT & BACK: Curved ash wood board. Natural and black.

LEGS: Black lacquered metal F1.

Dimensions



ORIGIN 100% Made in Spain

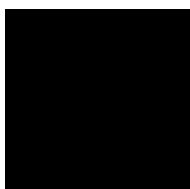
WARRANTY 5 years

There is a five-year warranty against manufacturing defects (materials and workmanship). Wear and tear and damage to the product are not covered by this warranty. User claims under this warranty must be submitted to the distributor of the product.

Finishes

MADE TO ORDER

Metal

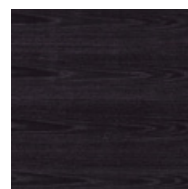


Black

Ash Wood



Natural



Black



Ref: 200001

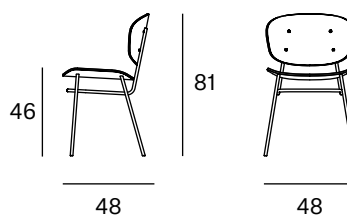
Materials

SEAT: Curved ash wood board covered with Fiber of 150 gr. Natural and black.

BACK: Curved ash wood board. Natural and black.

LEGS: Black lacquered metal F1.

Dimensions



ORIGIN 100% Made in Spain

WARRANTY 5 years

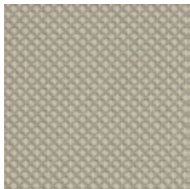
There is a five-year warranty against manufacturing defects (materials and workmanship). Wear and tear and damage to the product are not covered by this warranty. User claims under this warranty must be submitted to the distributor of the product.

Finishes

MADE TO ORDER

Upholstery Selection Blasco&Vila

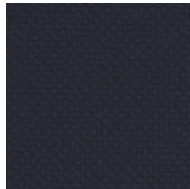
RIU Collection



61200

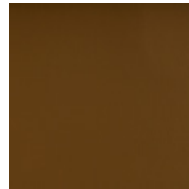


61201



66201

ECO Collection



Cognac



Mocca



Schwarz

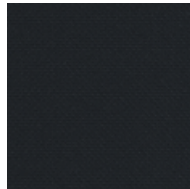
MAR Collection



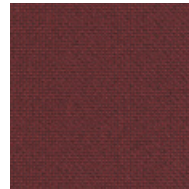
60112



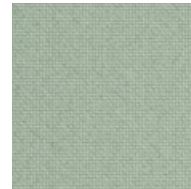
60110



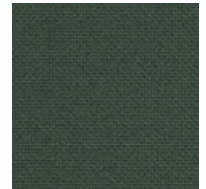
60111



64196



68262

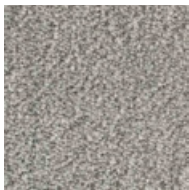


68182

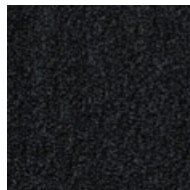
BIO Collection



Ivory



Steel



Onyx

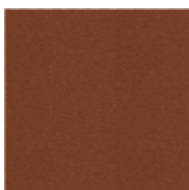


Forest

LUZ Collection



156



91



131



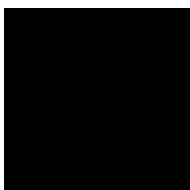
510

CUSTOM Endless customisation

We can customise the product with any other upholstery:

Kvadrat
Gabriel
Camira
Sunbrella
Spradling
Crevin
etc.

Metal

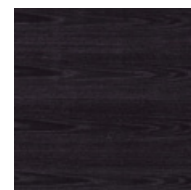


Black

Ash Wood



Natural



Black



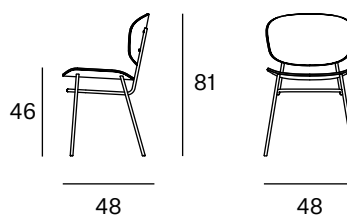
Ref: 200002

Materials

SEAT & BACK: Curved ash wood board covered with Fiber of 150 gr. Natural and black.

LEGS: Black lacquered metal F1.

Dimensions



ORIGIN 100% Made in Spain

WARRANTY 5 years

There is a five-year warranty against manufacturing defects (materials and workmanship). Wear and tear and damage to the product are not covered by this warranty. User claims under this warranty must be submitted to the distributor of the product.

Finishes

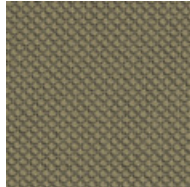
MADE TO ORDER

Upholstery Selection Blasco&Vila

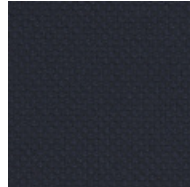
RIU Collection



61200

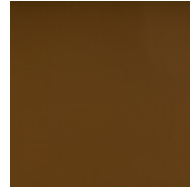


61201



66201

ECO Collection



Cognac



Mocca



Schwarz

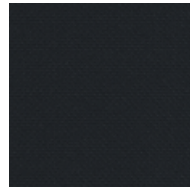
MAR Collection



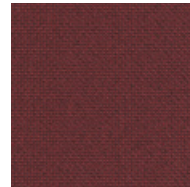
60112



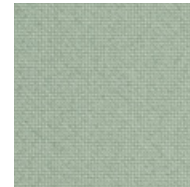
60110



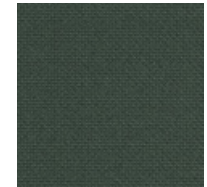
60111



64196



68262

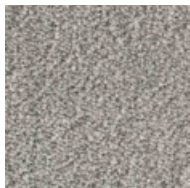


68182

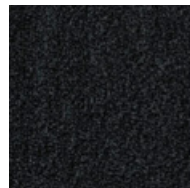
BIO Collection



Ivory



Steel



Onyx

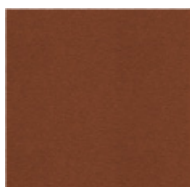


Forest

LUZ Collection



156



91



131



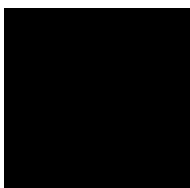
510

CUSTOM Endless customisation

We can customise the product with any other upholstery:

Kvadrat
Gabriel
Camira
Sunbrella
Spradling
Crevin
etc.

Metal

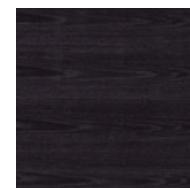


Black

Ash Wood



Natural



Black

Armchair

Francesc Rifé**2022**

The industrial character of Fosca chair is the result of a framework of rigorous metal lines and an almost naked seat and backrest. Lightweight pieces that come in various finishes, capable of connecting with both residential and contract and hospitality spaces. Trying to be as rational as possible, the collection grows and is presented in a wide range of upholsteries and typologies: chairs, armchairs, high and medium stools and stools without backrest and with handle in three different heights.

Interior and industrial designer, Francesc Rifé founds his own studio in Barcelona in 1994. Influenced by minimalism and following a familiar tradition linked to craftsmanship, his work focuses on ways of approaching spatial order and proportion. Currently, Rifé leads a team of professionals from several design fields that has won several awards: Contract World, Red Dot, HiP in Chicago, ICFF Editors, FAD, Delta and several ASCER awards.





Ref: 200003

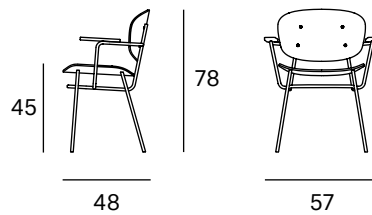
Materials

SEAT & BACK: Curved ash wood. Natural and black.

ARMRESTS: Ash wood. Natural and black.

LEGS: Black lacquered metal F1.

Dimensions



ORIGIN 100% Made in Spain

WARRANTY 5 years

There is a five-year warranty against manufacturing defects (materials and workmanship). Wear and tear and damage to the product are not covered by this warranty. User claims under this warranty must be submitted to the distributor of the product.

Finishes

MADE TO ORDER

Metal

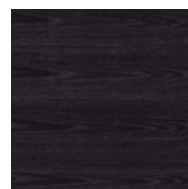


Black

Ash Wood



Natural



Black



Ref: 200004

Materials

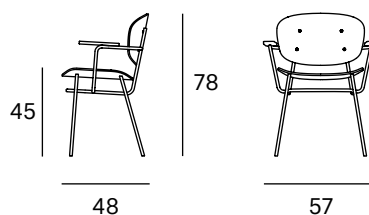
SEAT: Curved ash wood board covered with Fiber of 150 gr. Natural and black.

BACK: Curved ash wood board. Natural and black.

ARMRESTS: Ash wood. Natural and black.

LEGS: Black lacquered metal F1.

Dimensions



ORIGIN 100% Made in Spain

WARRANTY 5 years

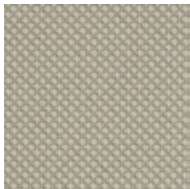
There is a five-year warranty against manufacturing defects (materials and workmanship). Wear and tear and damage to the product are not covered by this warranty. User claims under this warranty must be submitted to the distributor of the product.

Finishes

MADE TO ORDER

Upholstery Selection Blasco&Vila

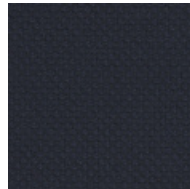
RIU Collection



61200

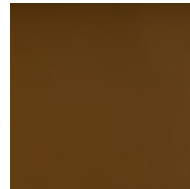


61201



66201

ECO Collection



Cognac



Mocca



Schwarz

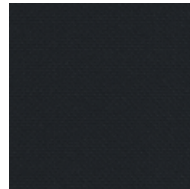
MAR Collection



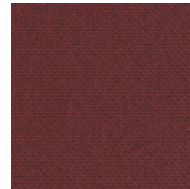
60112



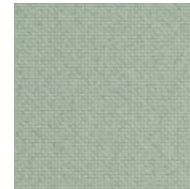
60110



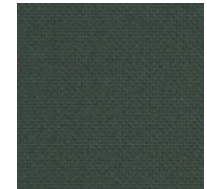
60111



64196



68262



68182

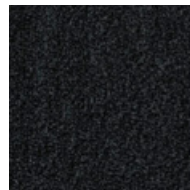
BIO Collection



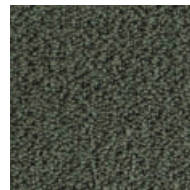
Ivory



Steel



Onyx

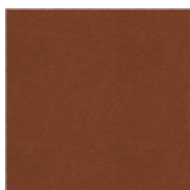


Forest

LUZ Collection



156



91



131



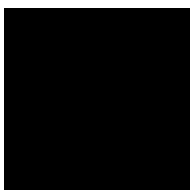
510

CUSTOM Endless customisation

We can customise the product with any other upholstery:

Kvadrat
Gabriel
Camira
Sunbrella
Spradling
Crevin
etc.

Metal

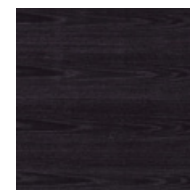


Black

Ash Wood



Natural



Black



Ref: 200005

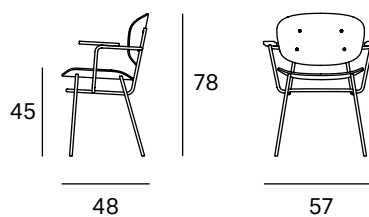
Materials

SEAT & BACK: Curved ash wood board covered with Fiber of 150 gr. Natural and black.

ARMRESTS: Ash wood. Natural and black.

LEGS: Black lacquered metal F1.

Dimensions



ORIGIN 100% Made in Spain

WARRANTY 5 years

There is a five-year warranty against manufacturing defects (materials and workmanship). Wear and tear and damage to the product are not covered by this warranty. User claims under this warranty must be submitted to the distributor of the product.

Finishes

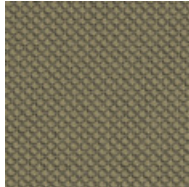
MADE TO ORDER

Upholstery Selection Blasco&Vila

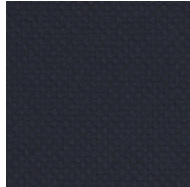
RIU Collection



61200

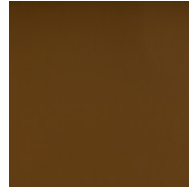


61201



66201

ECO Collection



Cognac

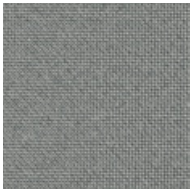


Mocca



Schwarz

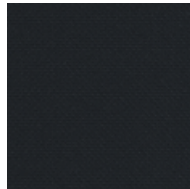
MAR Collection



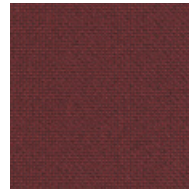
60112



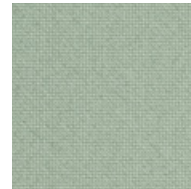
60110



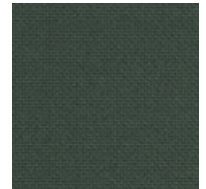
60111



64196



68262

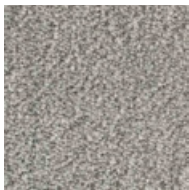


68182

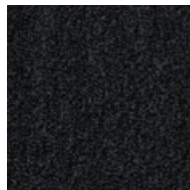
BIO Collection



Ivory



Steel



Onyx

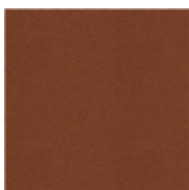


Forest

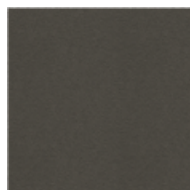
LUZ Collection



156



91



131



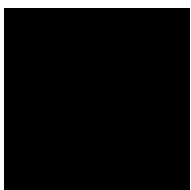
510

CUSTOM Endless customisation

We can customise the product with any other upholstery:

Kvadrat
Gabriel
Camira
Sunbrella
Spradling
Crevin
etc.

Metal

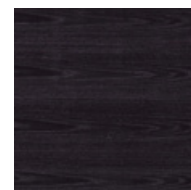


Black

Ash Wood



Natural



Black