

UFL

AS202



UFL is an industry leader in the manufacture and supply of a wide selection of landside and airside products including mass seating, counters, passenger facilitation, hospitality, lounge and complementary furniture.

We manufacture using high-performance materials, featuring ergonomic design for superior passenger comfort and space economy. To deliver the optimum passenger experience we tap into global trends, new materials and innovative technology, to meet your needs through innovative products, advice and customisation.

UFL has a commitment to quality and sustainability in both design and manufacture. We hold ISO 9001 certification.

Wherever possible, we consider each product's lifecycle, choosing materials and components which can be reused and recycled. We're also consciously working to reduce our carbon footprint and impact on the planet.

UFL is a proud member of ACI Airports Council International.



Found in airports worldwide and trusted to last, the AS202 has long proven itself landside and airside. UFL's original beam seat, the AS202 has a clean aesthetic and a highly robust construction. Available in four different finishes – steel, ply, upholstered and PU – the AS202 is hugely flexible and customisable for any area.

The steel seat pan's stylish perforated design is complemented by an ergonomic shape. Add a ply shell enhancement to create a relaxed, warm, and natural look. Either seat pan can also be upholstered, offering extra comfort for extended periods of use. PU seat and back pads can be fitted to the steel seat pan offering further options.

Its high spec construction is its strength. Starting with a cold rolled mild steel beam, the AS202 has pressure die cast aluminium legs and arms attached with an overlapping bracket. The powdercoated steel seat is also hard wearing and robust – an excellent, elegant choice for high traffic areas.

Ease of assembly by local contractors makes it the perfect choice for shipping to remote locations.

Overview

The beam seat that deserves a standing ovation.

AS202 has an excellent track record in the most stylish and demanding airport environments, both landside and airside. Its strength lies in its blend of highly robust construction and flexible customisation.

- **Available as 2, 3, 4, 5 and 6 seater units**
- **Arms**
Units have end arms as standard – removable if needed
Intermediate arms are optional
- **Tables**
End or intermediate tables are optional
- **Power**
Power can be integrated to underside of beam and/or fitted within tables
- **Fixing & Linking**
Floor fixed, back-to-back or side-to-side linking options
Linked configurations of 90° and 120° angles are also available
- **PRM seating is available as required**
- **Custom solutions available**



Finishes

A huge range of finishes and feature options makes the AS202 extremely versatile for customising to suit a range of aesthetics and budgets.

Seat Pan

Available in a range of finishes:

- Perforated steel with double silver powdercoat
- Perforated steel with upholstered seat and back pads
- Perforated steel with upholstered seat pads only
- Perforated steel with PU seat and back pads
- Perforated steel with PU seat pads only
- Moulded beech plywood
- Moulded beech plywood with upholstered seat and back pads
- Moulded beech plywood with upholstered seat pads only
- Fully upholstered shell

Arms

Pressure die cast aluminium arms, with a double silver powdercoat.

Bracket

Cast iron bracket, with a double silver powdercoat.

Beam

Hollow beam of 3mm mild steel, with a double silver powdercoat.

Upholstery

High quality vinyl, leather or fabric upholstery to specification.

PU Pads

Fire retardant solid PU in 6 standard colours.

Legs

Pressure die cast aluminium legs, with a double silver powdercoat.

Extra Features Available

Offering a wide range of high quality finishes for your client's flexibility, passengers prefer the AS202 for its comfort and convenience features.

Ergonomic Design

The AS202 beam seat shape has been tested and proven worldwide for comfort. One reason for this is its gentle roll in the lumbar region – an ergonomic improvement that lets passengers sit further into the seat, naturally cradling the back for a healthy, comfortable posture. This makes the AS202 excellent for long term seating.

Tables

These can be placed at any interval on the beam. Intermediate and end tables come in HPL, timber or your specified material. End tables in standard or custom shapes and sizes offer a myriad of possibilities.

Power

A power rail can be integrated to the underside of beams or within tables – whether general power or fast charge USB.



1. Seat pan
2. Arms
3. Bracket
4. Beam
5. Upholstery/PU
6. Legs

1. Gold Coast Airport,
Australia
2. Borg el Arab Airport,
Egypt



1.



2.

Upholstered vs. Ply vs. Steel

Switch up the entire look and feel of the versatile AS202 by selecting from a wide range of padded upholstery, sleek steel or natural ply.

Steel

Strong and simple, the powdercoated steel seat has a contemporary, graphic design and is extremely hard wearing, perfect for high traffic areas.



Upholstered Steel

Fire retardant foam seat and back pads fix directly to seat pans, and are easily fitted, removed and replaced. Choose from leather, vinyl or fabric in a variety of colours.



Steel with PU

For extra durability, choose from our fire retardant PU, available in 6 standard colours.



Ply

This strong, flexible and sustainable seating solution is made from FSC accredited beech ply, coated in a clear, durable lacquer.



Upholstered Ply

Finish in a range of leather, vinyl or fabric covered seat and back pads for improved comfort.



AS202

1. Cold rolled mild steel beam with overlapping bracket for extra reinforcement
2. Ergonomically designed seat pan to cradle the back and provide long term comfort, with perforated steel for easy drainage of spills

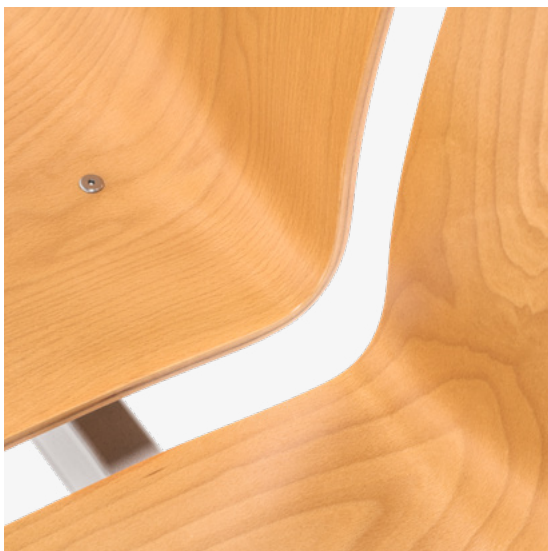
1.



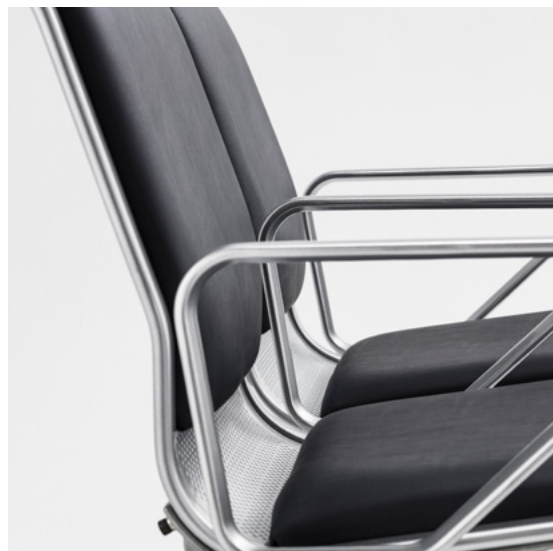
2.



3.



4.



3. FSC sustainably grown beech timber for a warm, natural look
4. Upholstered seat pads for extra comfort and support, available in your choice of vinyl, leather or fabric

Product Detail



Warranty

UFL supplies a 5-year structural warranty on all beam seating. Extended warranties are available for specific projects.

Ecological Impact

The ply shell is sourced from an FSC accredited, sustainably managed forest – so you can specify it with confidence. Fast growing eucalyptus gives ply veneer its strength and low impact sustainable credentials. Both the ply and the metal frame can be easily recycled at the end of the product's long lifecycle.

Arms

End and intermediate arms clamp onto the support beam for extra stability, providing a solid armrest for improved comfort, while deterring travellers from lying down. Intermediate arms can be easily retrofitted.

Legs

Pressure die cast aluminium legs are tested to exceed expectations for heavy duty commercial use. Clamped to the beam for maximum stability, legs also support the beam when weight is placed on the front edge or pushed against the back edge. Adjustable glides make levelling each unit quick and easy.

Seat Pan

A single piece of mild steel offers ergonomic lumbar support, while perforations are effective at draining spills. The moulded ply option is FSC sustainably grown Eucalyptus Beech hardwood timber in a clear natural lacquer finish. Both seat pan options are fixed to the support beam by cast iron brackets.

PU Pads

Fire retardant PU seat and back pads can be fitted to the steel seat pan option. These soft, slightly spongy PU pads effectively improve comfort levels for long term seating, while remaining easy to clean.

Beam & Bracket

Cast iron brackets bolt the seat to the cold rolled mild steel (3mm) support beam for additional strength. Bracket construction is crucial, as they are constantly under stress. Their shape and materials are rigorously tested and proven in large commercial airports for outstanding strength and durability.

Fixing

Floor fixing or beam-to-beam fixing brackets are available as options to prevent or deter movement of the beams from their intended position. Brackets fit over the adjustable foot glide and are bolted to the floor or attached to another beam as required. Available in stainless steel or powdercoated finish.

Back-to-back or side-to-side linking options are also available for locking units together, as are linked configurations in both 90° and 120° angles.

Upholstery

Upholstered pads improve warmth and appearance, providing comfort and support, while protecting metalwork from wear and tear. Fire retardant foam seat and back pads fix directly to the steel seat pan and are easily fitted, removed and replaced when needed. Seat and back pads are available in house vinyl, leather, or your preferred material specification.

PRM

- PRM seating is available as required
- Seat spacing may be increased or decreased in size if required
- Seat and arm height may be increased by 30mm to assist passengers with reduced mobility
- Printing on PU, vinyl or leather upholstery is a further option to create designated seating categories or zones for passengers with reduced mobility

AS202



Dimensions

Perforated Steel (with/without upholstery/PU)

2 seater – 1205W x 690D x 825H Seat 450H

3 seater – 1780W x 690D x 825H Seat 450H

4 seater – 2355W x 690D x 825H Seat 450H

5 seater – 2930W x 690D x 825H Seat 450H

6 seater – 3505W x 690D x 825H Seat 450H

Ply (with/without upholstery)

2 seater – 1225W x 670D x 810H Seat 450H

3 seater – 1820W x 670D x 810H Seat 450H

4 seater – 2395W x 670D x 810H Seat 450H

5 seater – 2970W x 670D x 810H Seat 450H

6 seater – 3545W x 670D x 810H Seat 450H

Beams come with end arms as standard

Dimensions in millimetres and to be used as a guide only

Tables

530W x 530D

530W x 300D

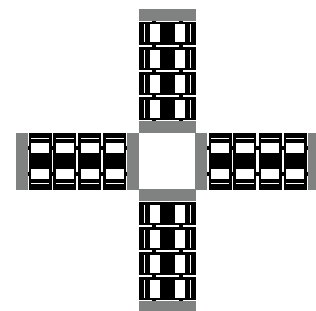
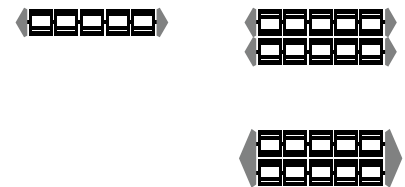
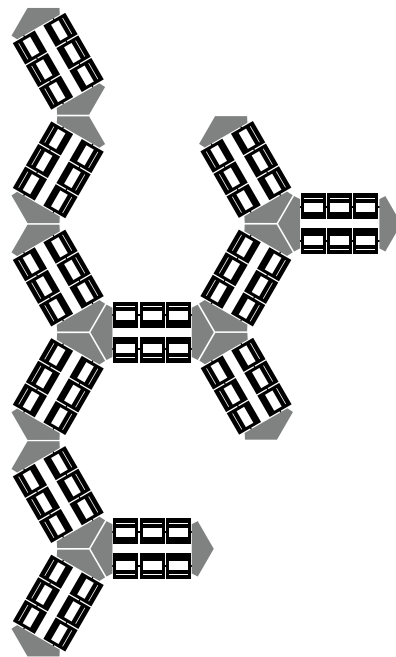
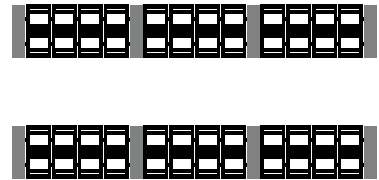
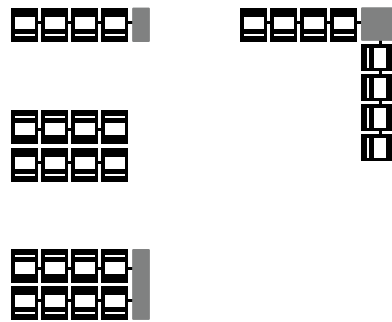
Custom table size and shapes available



Configurations

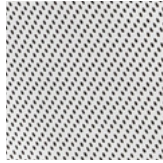
The AS202 comes in multiple configurations including straight rows, back-to-back, and linked configurations in 90° and 120° angles for almost endless possibilities.

End tables are available in a rectangular shape for straight rows, and in custom shapes to link beams at an angle. Intermediate tables can be added between seats.

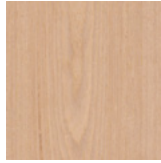


Materials

Seat Pan



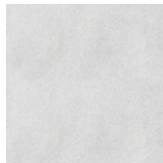
Perforated steel
with double silver
powdercoat



Beech plywood
with a natural
lacquer

Custom plywood stains available for projects

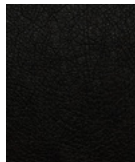
Armrests & Legs



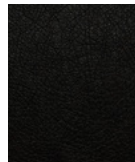
Aluminium steel
with double silver
powdercoat

Custom options available for projects

Upholstery



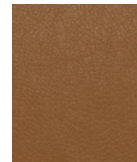
Black leather



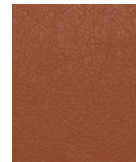
Black vinyl



Blue vinyl



Tan vinyl



Tobacco vinyl



Wine vinyl

Customer specified material also available

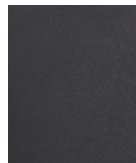
PU Pads



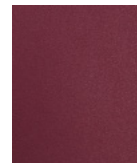
Black



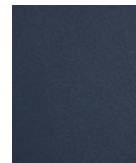
Light grey



Charcoal



Wine



Blue



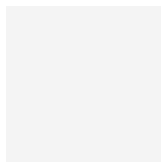
Green

Customer specified material also available

Table Tops



Black HPL



White HPL

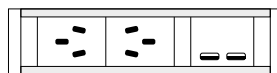


Beech veneer

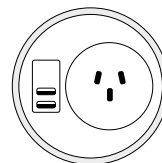


Oak veneer

Power



Power & USB rail fitted
underneath seat



Power & USB fitted
to table