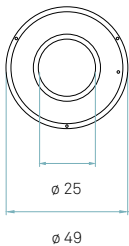
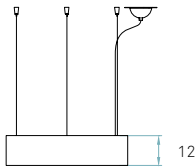


# Fluorescent *Saturnia* / SMALL SUSPENSION

by Oskar Cerezo



REF. SAT SP 21  
Saturnia Small



References

- SAT SP
- SAT SP DIM
- SAT SP DIMRC

Certificates

CE  
Class I  
220 - 250V



Wood shade colours

- 20 Ivory White
- 21 Natural Cherry
- 22 Natural Beech
- 24 Yellow
- 25 Orange
- 26 Red
- 28 Blue
- 29 Grey
- 30 Turquoise
- 31 Chocolate
- 32 Pink

Components



**Top diffuser**  
Black or White

**Note:** The standard top diffuser is white. Black is also available if you want no upward light diffusion.

**Bottom diffuser**  
Matt satin acrylic



**Metal canopy**  
Brushed Nickel  
ø 10 cm - disc ø 14 cm

**Electrical cable**  
Transparent 2 m drop



**Steel cable**  
3 x 2 m drop



**Box size**  
61 x 61 x 34 cm

**Box volume**  
0,127 m<sup>3</sup>

**Weight**  
Gross - 7,2 Kg  
Net - 3,5 Kg



**T5C**



**Circline Fluorescent**  
1 x 60 W

(included)

**Energy class**



**Ballast**

TRIDONIC  
1 unit - Ref. 87500513

PHILIPS  
1 unit - Ref. 913700761966

BAG  
1 unit - Ref. 10096389  
+ Remote Control - DANLERS

Details

Input Voltage	Luminous Flux *	CRI	Watt.	Total Watt.	CCT	Lifetime (L70)
220 - 250V	3559 lm	85	1 x 60 W	60 W	3000 K	12000h

\* Measurements taken using white shades, Veneer Ref: 20 Ivory White



References

SAT SP LED DIM0-10V

SAT SP LED DIMBT

Certificates



Class I

Dimmable:  
120 - 277V

Bluetooth Dimming:  
220 - 240V



Wood shade colours

- 20 Ivory White
- 21 Natural Cherry
- 22 Natural Beech
- 24 Yellow
- 25 Orange
- 26 Red
- 28 Blue
- 29 Grey
- 30 Turquoise
- 31 Chocolate
- 32 Pink



REF. SAT SP LED 21  
Saturnia Small

Components



**Top diffuser**  
Black or White

**Note:** The standard top diffuser is white. Black is also available if you want no upward light diffusion.

**Bottom diffuser**  
Matt satin acrylic



**Metal canopy**  
Brushed Nickel  
ø 17 cm

**Electrical cable**  
Transparent 2 m drop



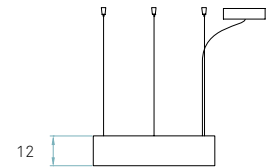
**Steel cable**  
3 x 2 m drop



**Box size**  
61 x 61 x 34 cm

**Box volume**  
0,127 m<sup>3</sup>

**Weight**  
Gross - 7,3 Kg  
Net - 3,1 Kg



**LED**



**Linear Module**  
4 x 5,5 W 350mA

**Energy class**



LED integrated



**Driver**

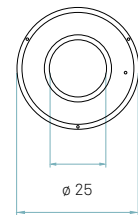


EFORE  
1 unit - Ref. RCL030-0700B



EFORE  
1 unit - Ref. RCL030-0700B  
+  
Bluetooth Control - CASAMBI / ELT  
1 unit - Ref. CBU - ASD

Driver housed in canopy.



ø 49

Details

Input Voltage	Luminous Flux *	CRI	Watt.	CCT	Lifetime (L70)
120 - 277V	1866 lm	90	25 W	3000 K	40000h
220 - 240V					

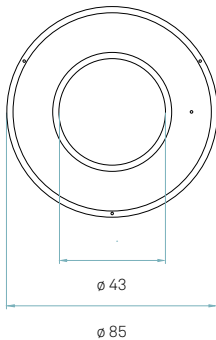
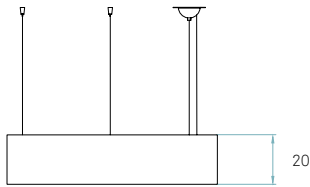
\* Measurements taken using white shades, Veneer Ref: 20 Ivory White

**Fluorescent Saturnia** / MEDIUM SUSPENSION

by Oskar Cerezo



REF. SAT SM 21  
Saturnia Medium



References

- SAT SM
- SAT SM DIM
- SAT SM DIMRC

Certificates

CE  
Class I  
220 - 250V



Wood shade colours

- 20 Ivory White
- 21 Natural Cherry
- 22 Natural Beech
- 24 Yellow
- 25 Orange
- 26 Red
- 28 Blue
- 29 Grey
- 30 Turquoise
- 31 Chocolate
- 32 Pink

Components



**Top diffuser**  
Black or White

**Note:** The standard top diffuser is white. Black is also available if you want no upward light diffusion.

**Bottom diffuser**  
Matt satin acrylic

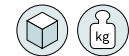


**Metal canopy**  
Brushed Nickel  
ø 10 cm - disc ø 14 cm

**Electrical cable**  
Transparent 2 m drop



**Steel cable**  
3 x 2 m drop



**Box size**  
117 x 114 x 50 cm  
Wood crated for transport

**Box volume**  
0,667 m<sup>3</sup>

**Weight**  
Gross - 38,5 Kg  
Net - 7,2 Kg



**T5**  
 Linear Fluorescent  
3 x 24 W  
(included)

**Energy class**  
 Tube included  
A



**Ballast**  
 TRIDONIC  
1 unit - Ref. 22185212  
 TRIDONIC  
1 unit - Ref. 22176209  
 BAG  
1 unit - Ref. 10097246  
1 unit - Ref. 10097296  
+ Remote Control - DANLERS

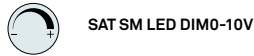
Details

Input Voltage	Luminous Flux *	CRI	Watt.	Total Watt.	CCT	Lifetime (L70)
220 - 250V	3630 lm	85	3 x 24 W	72 W	3000 K	30000h

\* Measurements taken using white shades, Veneer Ref: 20 Ivory White



References



SAT SM LED DIM0-10V



SAT SM LED DIMBT

Certificates



Class I

Dimmable:  
120 - 277V

Bluetooth Dimming:  
220 - 240V



Wood shade colours

- 20 Ivory White
- 21 Natural Cherry
- 22 Natural Beech
- 24 Yellow
- 25 Orange
- 26 Red
- 28 Blue
- 29 Grey
- 30 Turquoise
- 31 Chocolate
- 32 Pink



REF. SAT SM LED 21  
Saturnia Medium

Components



**Top diffuser**  
Black or White

**Note:** The standard top diffuser is white. Black is also available if you want no upward light diffusion.

**Bottom diffuser**  
Matt satin acrylic

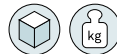


**Metal canopy**  
Brushed Nickel  
ø 17 cm

**Electrical cable**  
Transparent 2 m drop



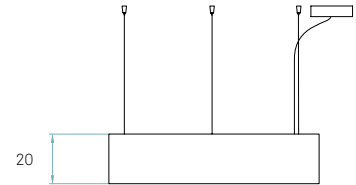
**Steel cable**  
3 x 2 m drop



**Box size**  
117 x 114 x 50 cm  
Wood crated for transport

**Box volume**  
0,667 m<sup>3</sup>

**Weight**  
Gross - 39,5 Kg  
Net - 7,9 Kg



LED

**Linear Module**  
6 x 8,1 W 700mA

**Energy class**

**A+**  
LED integrated

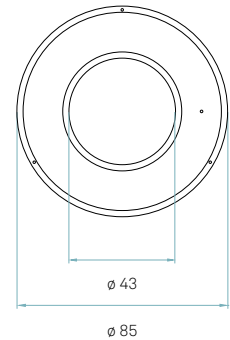


Driver

ERP  
1 unit - Ref. RCL050-1400B

ERP  
1 unit - Ref. RCL050-1400B  
+ Bluetooth Control - CASAMBI / ELT  
1 unit - Ref. CBU - ASD

Driver housed in canopy.



Details

Input Voltage	Luminous Flux *	CRI	Watt.	CCT	Lifetime (L70)
120 - 277V / 220 - 240V	4593 lm	90	57 W	3000 K	40000h

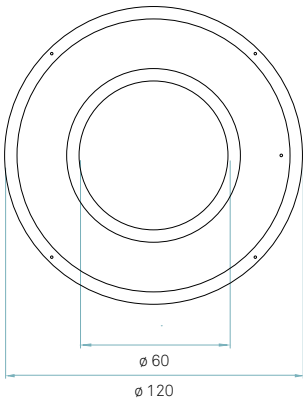
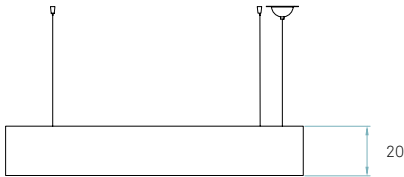
\* Measurements taken using white shades, Veneer Ref: 20 Ivory White

# Fluorescent *Saturnia* / LARGE SUSPENSION

by Oskar Cerezo



REF. SAT SG 30  
Saturnia Large



References

- SAT SG
- SAT SG DIM
- SAT SG DIMRC

Certificates

CE  
Class I  
220 - 250V



Wood shade colours

- 20 Ivory White
- 21 Natural Cherry
- 22 Natural Beech
- 24 Yellow
- 25 Orange
- 26 Red
- 28 Blue
- 29 Grey
- 30 Turquoise
- 31 Chocolate
- 32 Pink

Components



**Top diffuser**  
Black or White

**Note:** The standard top diffuser is white. Black is also available if you want no upward light diffusion.

**Bottom diffuser**  
Matt satin acrylic



**Metal canopy**  
Brushed Nickel  
ø 10 cm - disc ø 14 cm

**Electrical cable**  
Transparent 2 m drop



**Steel cable**  
4 x 2 m drop



**Box size**  
139 x 38 x 147 cm  
Wood crated for transport

**Box volume**  
0,782 m<sup>3</sup>

**Weight**  
Gross - 53,5 Kg  
Net - 13,5 Kg



**T5**  
 Linear Fluorescent  
4 x 24 W  
(included)

Energy class

- A<sup>++</sup>
  - A<sup>+</sup>
  - A
  - B
  - A
- Tube included



- Ballast**
- TRIDONIC  
1 unit - Ref. 22185212
  - TRIDONIC  
2 units - Ref. 22185104
  - BAG  
2 units - Ref. 10097296  
+ Remote Control - DANLERS

Details

Input Voltage	Luminous Flux *	CRI	Watt.	Total Watt.	CCT	Lifetime (L70)
220 - 250V	4840 lm	85	4 x 24 W	96 W	3000 K	30000h

\* Measurements taken using white shades, Veneer Ref: 20 Ivory White

References

- SAT SG LED DIM0-10V
- SAT SG LED DIMBT

Certificates

Class I

Dimmable:  
**120 - 277V**

Bluetooth Dimming:  
**220 - 240V**

FSC® C110841  
The mark of responsible forestry

Wood shade colours

- 20 Ivory White
- 21 Natural Cherry
- 22 Natural Beech
- 24 Yellow
- 25 Orange
- 26 Red
- 28 Blue
- 29 Grey
- 30 Turquoise
- 31 Chocolate
- 32 Pink



REF. SAT SG LED 24  
Saturnia Large

Components



**Top diffuser**  
Black or White  
crylic



**Metal canopy**  
Brushed Nickel  
ø 23 cm

**Electrical cable**  
Transparent 2 m drop



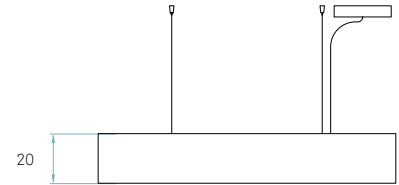
**Steel cable**  
4 x 2 m drop



**Box size**  
139 x 38 x 147 cm  
Wood crated for transport

**Box volume**  
0,782 m<sup>3</sup>

**Weight**  
Gross - 55,3 Kg  
Net - 15,3 Kg



**LED**  
Linear Module  
9 x 8,1 W 700mA

**Energy class**  
 LED integrated

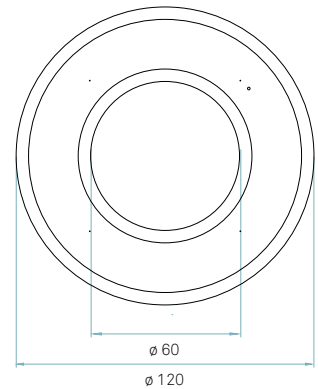


**Driver**

EFORE  
1 unit - Ref. RCL030-0700B  
1 unit - Ref. RCL050-1400B

EFORE  
1 unit - Ref. RCL030-0700B  
1 unit - Ref. RCL050-1400B  
+  
Bluetooth Control - CASAMBI / ELT  
1 unit - Ref. CBU - ASD

Driver housed in canopy.



Details

Input Voltage	Luminous Flux *	CRI	Watt.	CCT	Lifetime (L70)
120 - 277V / 220 - 240V	6890 lm	90	85 W	3000 K	40000h

\* Measurements taken using white shades, Veneer Ref: 20 Ivory White