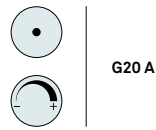




REF. G20 A 26, G30 A 25, G42 A 27 & G2 A 27  
Gea Small, Large & Medium / Small Guijarro

References



Certificates

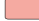


Class I

220 - 250V



Wood shade colours

-  20 Ivory White
-  21 Natural Cherry
-  22 Natural Beech
-  24 Yellow
-  25 Orange
-  26 Red
-  28 Blue
-  29 Grey
-  30 Turquoise
-  31 Chocolate
-  32 Pink

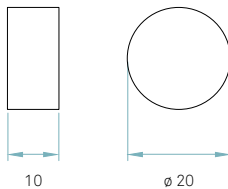
Components



**Frontal diffuser**  
Matt satin acrylic



**Back plate**  
White metal enamel



Packaging



**Box size**  
24 x 24 x 42 cm

**Box volume**  
0,024 m<sup>3</sup>

**Weight**  
Gross - 1,2 Kg  
Net - 0,6 Kg

Recommended bulbs (Not Included)



**GX53**



LED Slim lamp  
1 x 7 W max.

or



LED Slim lamp DIM  
1 x 7 W max.

Energy class



## References



G20 A LED DIM0-10V

## Certificates



Class I

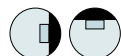
120 - 277V



## Wood shade colours

- 20 Ivory White
- 21 Natural Cherry
- 22 Natural Beech
- 24 Yellow
- 25 Orange
- 26 Red
- 28 Blue
- 29 Grey
- 30 Turquoise
- 31 Chocolate
- 32 Pink

## Components

**Frontal diffuser**  
Matt satin acrylic**Back plate**  
White metal enamel

## Packaging

**Box size**  
24 x 24 x 42 cm**Box volume**  
0,024 m<sup>3</sup>**Weight**  
Gross - 1,2 Kg  
Net - 0,6 Kg**LED****Linear Module**  
4 x 3,15 W 250mA**Driver****EFORE**  
1 unit - Ref. RCL010-0250A

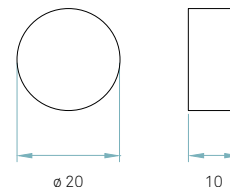
## Energy class



LED integrated

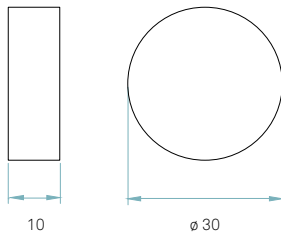
## Details

Input Voltage	Luminous Flux	CRI	Watt.	CCT	Lifetime (L70)
120 - 277V	659	90	12 W	3000 K	40000h

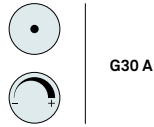
REF. G20 A LED 29, G30 A LED 29 & G42 A LED 29  
Gea Small, Medium & Large



REF. G20 A 26, **G30 A 24,25, 26**, G42 A 24,25  
Gea Small, **Medium** & Large



References



Certificates



Class I

220 - 250V



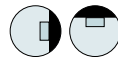
Wood shade colours

	20 Ivory White
	21 Natural Cherry
	22 Natural Beech
	24 Yellow
	25 Orange
	26 Red
	28 Blue
	29 Grey
	30 Turquoise
	31 Chocolate
	32 Pink

Components



**Frontal diffuser**  
Matt satin acrylic



**Back plate**  
White metal enamel



**Box size**  
41 x 41 x 27 cm

**Box volume**  
0,045 m<sup>3</sup>

**Weight**  
Gross - 2,4 Kg  
Net - 0,9 Kg

Recommended bulbs (Not Included)



**GX53**



LED Slim lamp  
1 x 7 W max.

or



LED Slim lamp DIM  
1 x 7 W max.

Energy class



## References



G30 A LED DIM0-10V

## Certificates



Class I

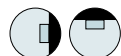
120 - 277V



## Wood shade colours

- 20 Ivory White
- 21 Natural Cherry
- 22 Natural Beech
- 24 Yellow
- 25 Orange
- 26 Red
- 28 Blue
- 29 Grey
- 30 Turquoise
- 31 Chocolate
- 32 Pink

## Components

**Frontal diffuser**  
Matt satin acrylic**Back plate**  
White metal enamel**Box size**  
41 x 41 x 27 cm**Box volume**  
0,045 m<sup>3</sup>**Weight**  
Gross - 2,4 Kg  
Net - 0,9 Kg**LED****Linear Module**  
6 x 3,15 W 250mA**Driver****EFORE**  
1 unit - Ref. RCL020-0500A

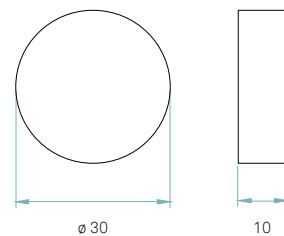
## Energy class

**A<sup>+</sup>**

LED integrated

## Details

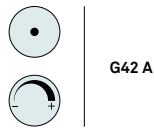
Input Voltage	Luminous Flux	CRI	Watt.	CCT	Lifetime (L70)
120 - 277V	1044	90	17 W	3000 K	40000h

REF. G20 A LED 29, G30 A LED 29 & G42 A LED 29  
Gea Small, Medium & Large



REF. G20 A 29, G30 A 29 & G42 A 29  
Gea Small, Medium & Large

References



G42 A

Certificates



Class I

220 - 250V



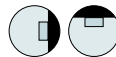
Wood shade colours

-  20 Ivory White
-  21 Natural Cherry
-  22 Natural Beech
-  24 Yellow
-  25 Orange
-  26 Red
-  28 Blue
-  29 Grey
-  30 Turquoise
-  31 Chocolate
-  32 Pink

Components



**Frontal diffuser**  
Matt satin acrylic



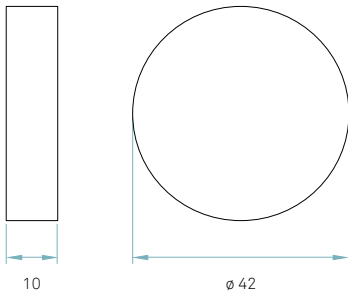
**Back plate**  
White metal enamel



**Box size**  
51 x 51 x 32 cm

**Box volume**  
0,083 m<sup>3</sup>

**Weight**  
Gross - 4,2 Kg  
Net - 1,8 Kg



Recommended bulbs (Not Included)



**GX53**



LED Slim lamp  
1 x 7 W max.

or

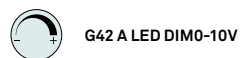


LED Slim lamp DIM  
1 x 7 W max.

Energy class



## References



G42 A LED DIM0-10V

## Certificates



Class I

120 - 277V



## Wood shade colours

- 20 Ivory White
- 21 Natural Cherry
- 22 Natural Beech
- 24 Yellow
- 25 Orange
- 26 Red
- 28 Blue
- 29 Grey
- 30 Turquoise
- 31 Chocolate
- 32 Pink

## Components



**Frontal diffuser**  
Matt satin acrylic



**Back plate**  
White metal enamel

## Packaging



**Box size**  
51 x 51 x 32 cm

**Box volume**  
0,083 m<sup>3</sup>

**Weight**  
Gross - 3,9 Kg  
Net - 1,5 Kg



LED

**Linear Module**  
16 x 3,15 W 250mA



Driver

**EFORE**  
1 unit - Ref. RCL030-0500A

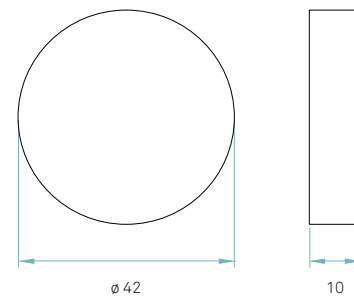
## Energy class

A<sup>+</sup>

LED integrated



REF. G42 A LED 29  
Gea Large



## Details

Input Voltage	Luminous Flux	CRI	Watt.	CCT	Lifetime (L70)
120 - 277V	1392	90	20 W	3000 K	40000h
220 - 240V					